



CheckMate™ Lawn and Athletic Field Striping Kits

1125 Mac Tech D

Lansing, MI 48906

800.411.0150

www.bigleaguelawns.com



CheckMate™ Scag SFC 21" Instructions Lawn Striping Kit Installation Guide

Important

Big League Lawns, LLC warrants their products to be free of defects in material and workmanship. This warranty does not cover defects due directly or indirectly to misuse, abuse, normal wear and tear, failure to properly maintain the product or used for a purpose other than that for which it is intended. The duration of this warranty is expressly limited to one year parts and labor beginning from the date of delivery to the original customer.

The obligation of Big League Lawns, LLC is limited solely to the repair or replacement, at our option, at its factory or authorized repair agent of any part that should prove deficient. Purchaser must maintain the product under normal operating conditions at all times. Prior to operation, become familiar with the attachment and any disconnect features. This product is not intended to be used in a transport position or to be backed over curbs. When not in use, the product should be removed from the mower and transported in a safe manner. Failure to follow these instructions will void the warranty.



Congratulations on your new purchase! You are just steps away from creating a beautifully patterned lawn using your new CheckMate™ lawn striping roller. To ensure a long life of both your mower and roller, please be sure to follow the mounting recommendations below.

Please note the following prior to installing your new CheckMate™ Striping System:



- All systems, regardless of hardware configurations, should be mounted at or below a 45 degree angle from the mower.

If you should have any questions regarding the use of a particular mounting method, please do not hesitate to contact us at 800.411.0150 or via email at sales@bigleaguelawns.com.

Important: If you purchased your striping kit through a 3rd party vendor and have any questions regarding your mounting options, please do not hesitate to contact us. We have a great wealth of knowledge, tips and tricks, which may be helpful. Unfortunately, when we receive purchase orders via 3rd party vendors we do not know in advance what mower the roller is being attached to.

Thank you,

Big League Lawns, LLC

When Mowing Isn't Enough... Let it Roll!

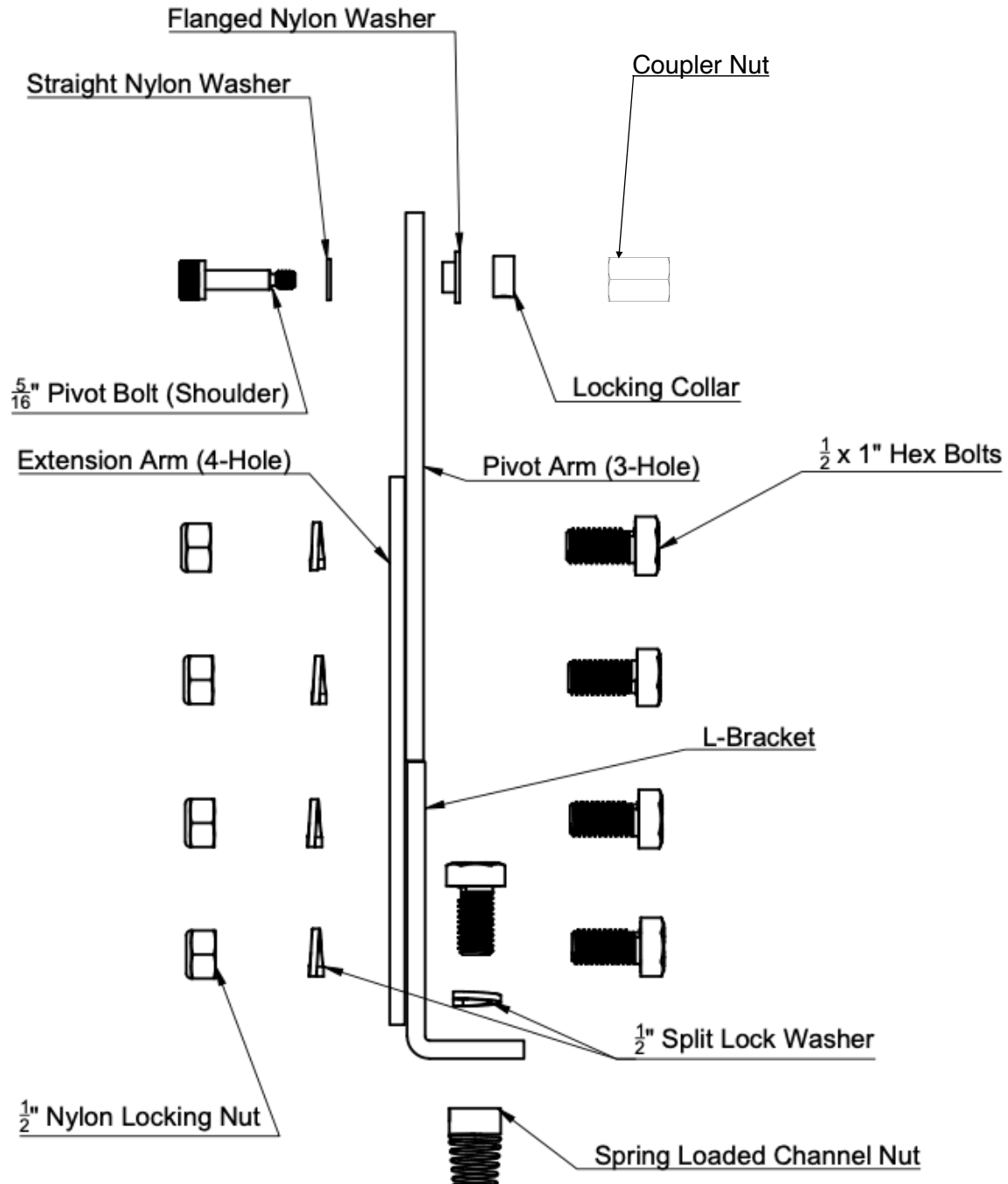
US Patent 6,962,039 B2

US Patent 6,993,894 B2

FEIN 38-3198349

Mounting

Important: Reference the photo below to assemble your mounting arms.





Remove the nut circled in red replace with supplied coupler nut.



Once your arms are installed to the coupler nuts, you are ready to bolt them to your striping kit.



Sample Coupling Process

Once bolts are in place, please use provided coupling adapter* to connect frame bolt to CheckMate™ pivot bolts.

(1) Acquire Hole



(2) Install bolt



(3) Add lock washer



(4) Tighten coupler nut



(5) Thread pivot bolt



(6) Tighten pivot bolt

