



**CheckMate™ Lawn and Athletic Field Striping Kits**

1125 Mac Tech Dr C

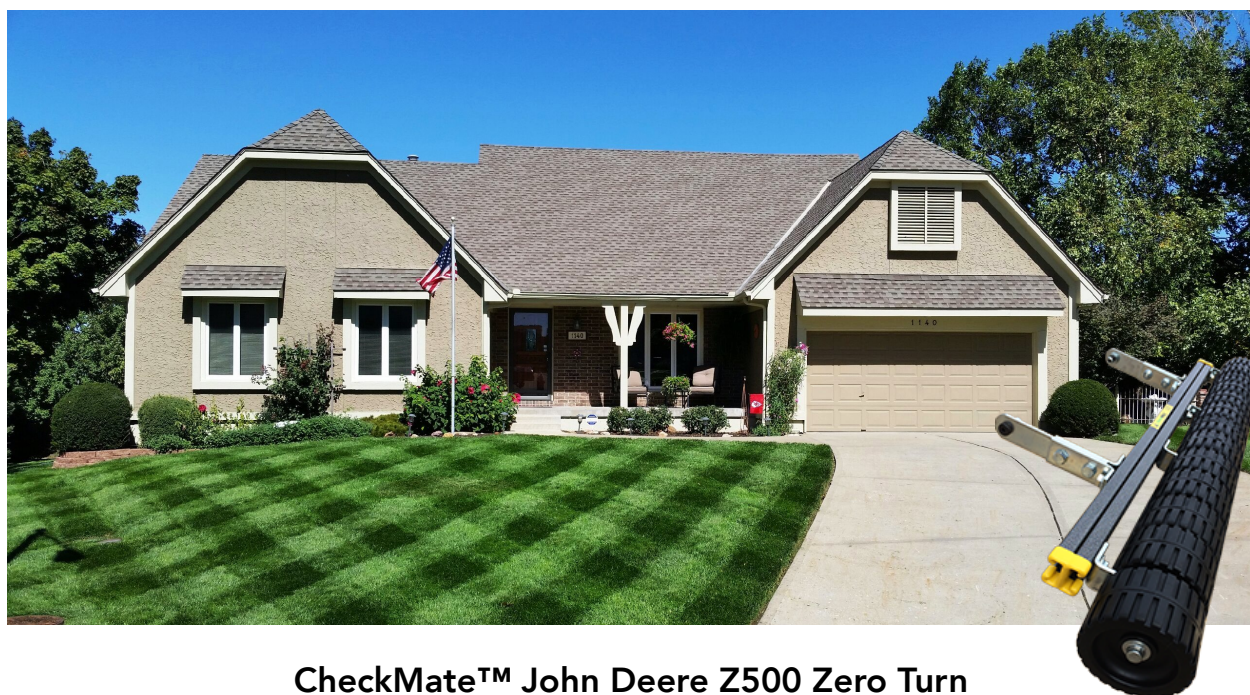


Lansing, MI 48906



800.411.0150

[www.bigleaguelawns.com](http://www.bigleaguelawns.com)



### **CheckMate™ John Deere Z500 Zero Turn Lawn Striping Kit Installation Guide**

#### **Important**

Big League Lawns, LLC warrants their products to be free of defects in material and workmanship. This warranty does not cover defects due directly or indirectly to misuse, abuse, normal wear and tear, failure to properly maintain the product or used for a purpose other than that for which it is intended. The duration of this warranty is expressly limited to one year parts and labor beginning from the date of delivery to the original customer.

The obligation of Big League Lawns, LLC is limited solely to the repair or replacement, at our option, at its factory or authorized repair agent of any part that should prove deficient. Purchaser must maintain the product under normal operating conditions at all times. Prior to operation, become familiar with the attachment and any disconnect features. This product is not intended to be used in a transport position or to be backed over curbs. When not in use, the product should be removed from the mower and transported in a safe manner. Failure to follow these instructions will void the warranty.



US Patent 6,962,039 B2, US Patent 6,993,894 B2

Congratulations on your new purchase! You are just steps away from creating a beautifully patterned lawn using your new CheckMate™ lawn striping roller. To ensure a long life of both your mower and roller, please be sure to follow the mounting recommendations within this packet.



If you should have any questions regarding the use of a particular mounting method, please do not hesitate to contact us at 800.411.0150 or via email at [sales@bigleaguelawns.com](mailto:sales@bigleaguelawns.com).

Important: If you purchased your striping kit through a 3<sup>rd</sup> party vendor and have any questions regarding your mounting options, please do not hesitate to contact us. We have a great wealth of knowledge, tips and tricks, which may be helpful. Unfortunately, when we receive purchase orders via 3<sup>rd</sup> party vendors we do not know in advance what mower the roller is being attached to.

Thank you,

Big League Lawns, LLC

**When Mowing Isn't Enough... Let it Roll!**

**US Patent 6,993,894 B2**

**US Patent 6,962,039 B2**

**FEIN 38-3198349**

## Mounting Option B and D

You will want to follow the schematics below to assemble your mounting arms.

**Mounting Option B** is usually the preferred option for the John Deere Z500, however if you need more clearance for your striping kit please use Option D as it incorporates extension arms.

**Tools Required:** For this installation you will need the following tools.



CheckMate™ Hardware



Drill  
(\*Depends on  
mower.)

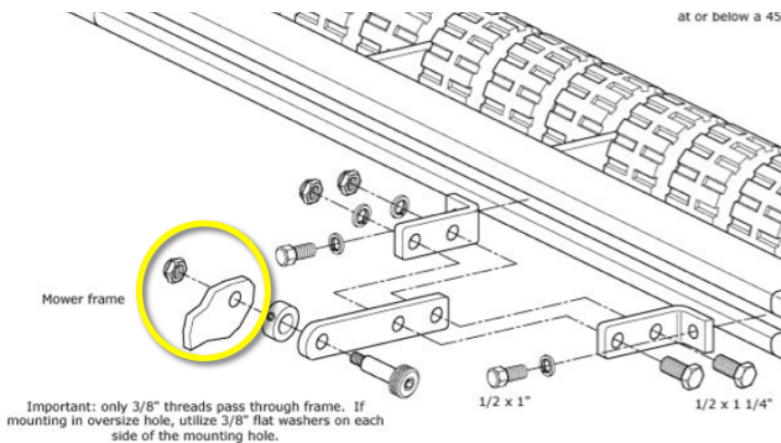


3/8" Drill Bit  
(\*Depends  
on mower.)

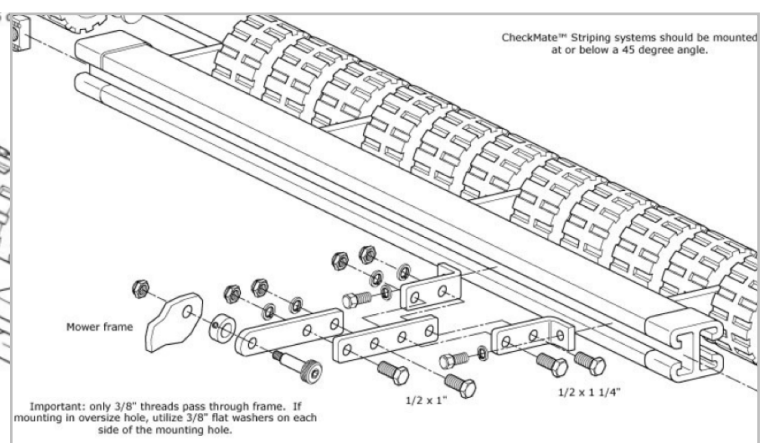


1/8" wrench or socket  
and 3/4" wrench or  
socket

### Option B



### Option D



**Scan the second QR code on the page included with your shipment to view a mounting arm installation tutorial.**



## Identify Mounting Bolt

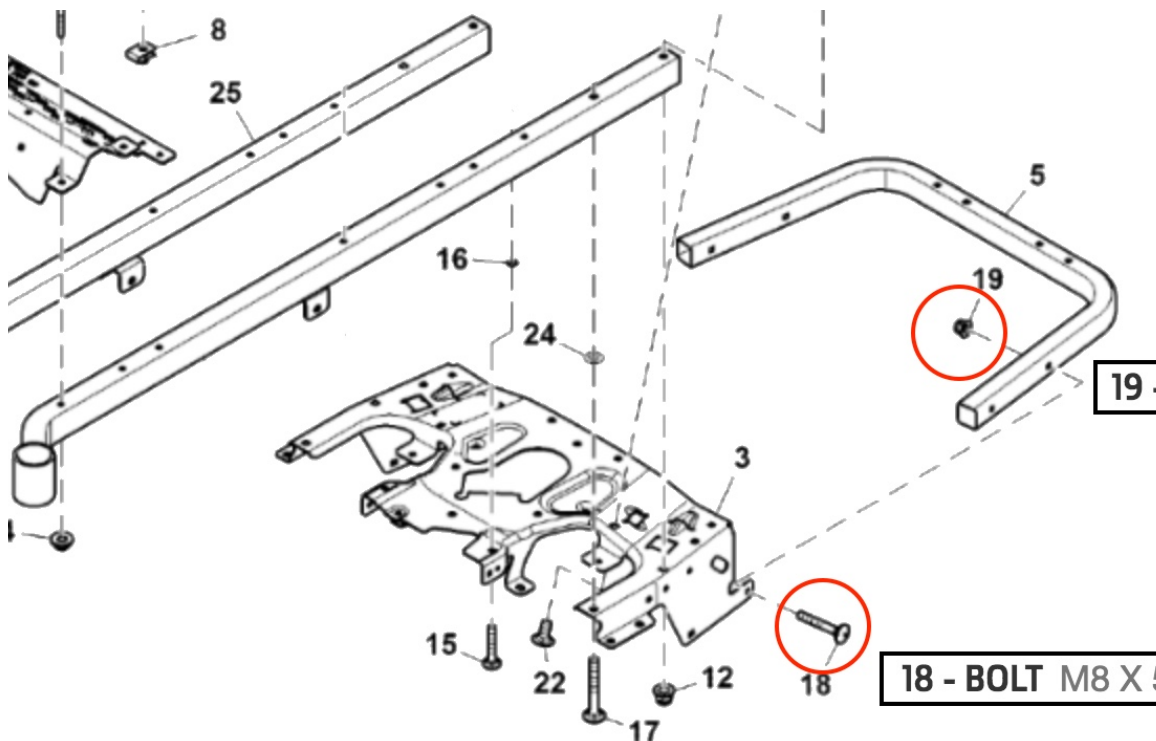
Because the John Deere Z500 has an angled bumper, the mounting hardware includes beveled washers that will help straighten out the angle for the mounting bolts. The beveled washer installation is pictured and explained on the next page. Make sure to follow these instructions to insure proper installation.

**For Installation, use the below schematic to locate your mounting bolt locations.**

**Bolt #18 should be removed. Existing hole should be widened approximately 1/16 of an inch using a 3/8" drill bit.**

**Provided 3/8" x 3" bolt should be inserted through the frame; with the bolt head under the machine and the threads pointing outward.**

**Add beveled washers, lock washer and 3/8" coupling nut (see coupling example page at the end of this packet)**





## Beveled Washer Example



**Once your Beveled washer is installed opposite to the angle of your frame, you will thread your pivot bolts and mounting arms to the open side of your coupler [Shown Below]**



## John Deere Z500 Series Instructions for Coupler Nut Installation

Remove your bumper frame bolts on each side of your mower (shown on the Z500 schematic), once removed you will replace it with the provided 3/8" x 2.5" bolt with the threads facing away from your mower on each side. Next, thread on lock washers and coupler nuts, thread the provided pivot bolts to the opposite side of the couplers (See guide below). **Follow Arm Assembly Guide on next page**

(1) Acquire Hole



(2) Install bolt



(3) Add lock washer



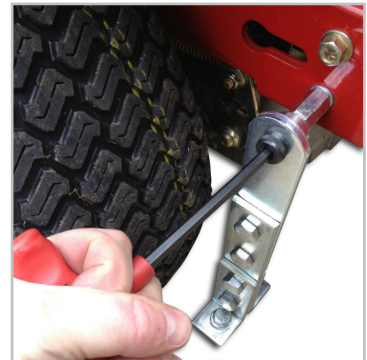
(4) Tighten coupler nut



(5) Thread pivot bolt



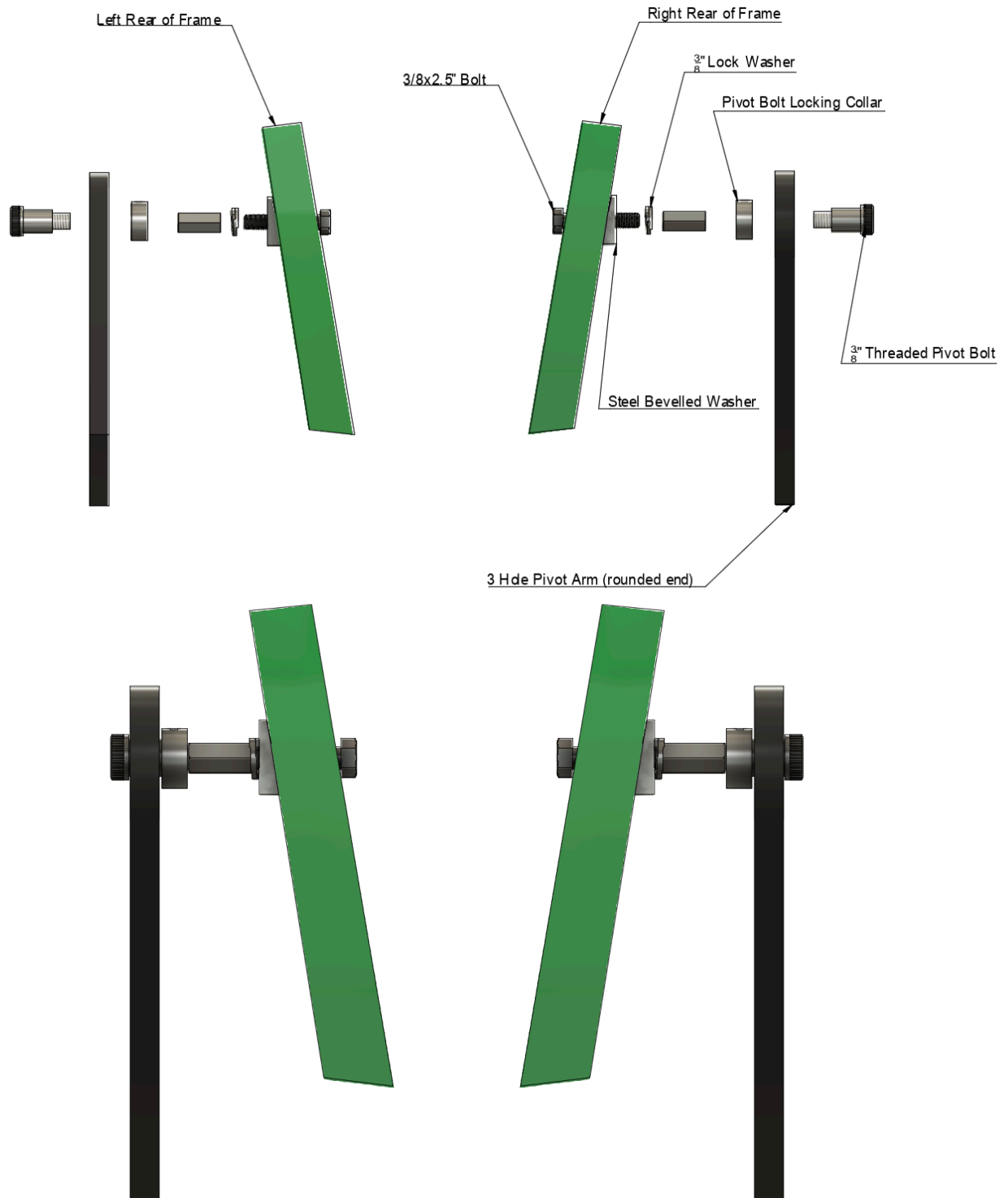
(6) Tighten pivot bolt



## Beveled Washer Angle Offset Tutorial

Due to the John Deere Z500's angled tubular framing/ Engine guard, you will need to offset the angle on one side of the frame so the bolt has flush contact with the outside of your tubular frame.

Below is a reference photo showing you how you should install your Bevelled washers on each side of your frame.





**Final Step For All Mounting Processes: Center the CheckMate™ behind the machine.**

Once you have the mounting arms assembled and placed on the roller, adjust the roller side to side until it is centered behind the mower. Once you have centered the CheckMate™ striping kit, you can proceed to tighten the mounting arms to the rollers gray channel/cross member.

