



1125 Mak-Tech Dr. Suite C



Lansing, MI 48906



800.411.0150

www.bigleaguelawns.com



CheckMate™ Lawn Striping Kit For Honda HRR Installation Guide

Important

Big League Lawns, LLC warrants their products to be free of defects in material and workmanship. This warranty does not cover defects due directly or indirectly to misuse, abuse, normal wear and tear, failure to properly maintain the product or used for a purpose other than that for which it is intended. The duration of this warranty is expressly limited to one year parts and labor beginning from the date of delivery to the original customer.

The obligation of Big League Lawns, LLC is limited solely to the repair or replacement, at our option, at its factory or authorized repair agent of any part that should prove deficient. Purchaser must maintain the product under normal operating conditions at all times. Prior to operation, become familiar with the attachment and any disconnect features. This product is not intended to be used in a transport position or to be backed over curbs. When not in use, the product should be removed from the mower and transported in a safe manner. Failure to follow these instructions will void the warranty.









US Patent 6,962,039 B2, US Patent 6,993,894 B2

Mounting Instructions Honda HRR Series Mowers

Congratulations on your new purchase! You are just steps away from creating a beautifully patterned lawn using your new CheckMate™ lawn striping roller. To ensure a long life of both your mower and roller, please be sure to follow the mounting recommendations below.

Note: For your reference, you can watch a video of this installation by going to our website and clicking on the Honda HRR product page and scrolling to the gallery section. You can also find the video on our youtube channel. We provide two HRR installation videos, all models leading up to the 2017 models, as well as 2018 and newer models.

Tools Required:

9/16" Wrench	7/32" Allen/ Hex	3/8" Drill Bit (or)	Fluted Drill Bit	Drill	Needle Nose Pliers
					

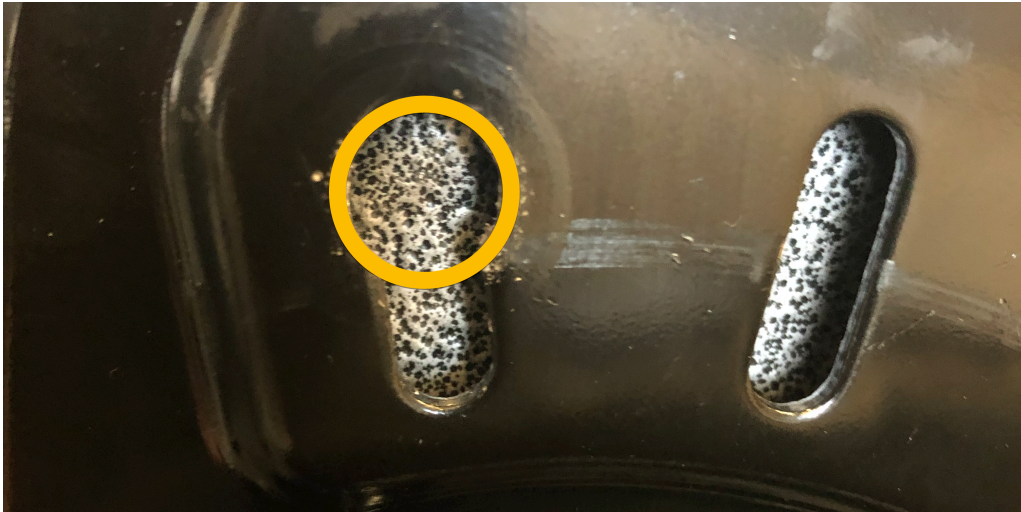
Step 1: Locate Mounting Location

The photo below depicts the mounting location of the CheckMate™ striping roller. The top of this oblong hole must CAREFULLY be widened 1/8" of an inch to accept the threaded portion of the pivot bolt. It is extremely important that this hole not be opened any wider; **only the threaded portion of the pivot bolt must pass through this hole.**



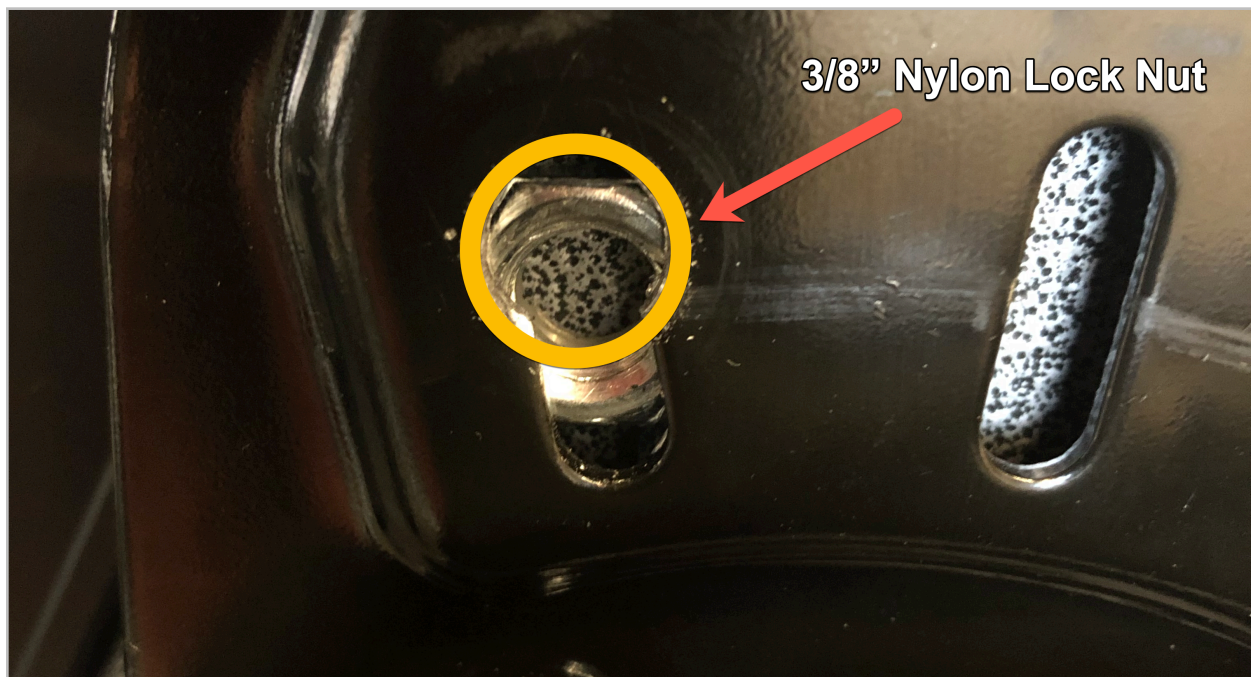
Step 2: Open top of existing oblong hole

Raise the wheel height adjustment lever to its top position; exposing the hole. Using your drill, carefully open the top of the oblong hole. Note, a 3/8" drill bit may bind or twist when attempting to drill into an existing hole while a grinding tool, such as a fluted drill bit, will not. Whichever tool you decide to use, please use caution while wearing eye protection at all times. [Important, hole must only be widened enough to accept 3/8" threaded pivot bolt.]



Step 3: Prepare to bolt Pivot Bolt to locking nut

Using needle nose pliers, carefully wedge the 3/8" nylon lock nut between the height adjustment bracket and the frame. The small gap will pinch the nut and allow it to remain in place. Once positioned, begin to hand thread the pivot bolt into the 3/8" nylon lock nut.



Step 4: Attach pivot bolt (and mounting arm) to the 3/8 nylon lock nut

Using your 7/32" Allen wrench (hex key), tighten the pivot bolt to the 3/8" locking nut. You will have to turn your 9/16" wrench 90 degrees as pictured below to get a solid grip on the lock nut, this will wedge your wrench on the inside of the bracket, which will keep your wrench stable during the tightening of the pivot bolts. Note; we have preinstalled two nylon bushings in the 'pivot arm' for you. When tightening the pivot bolt to the frame, please make sure that both the inside and outside nylon bushings are properly seated in their corresponding holes. Tighten the bolt all the way down. Once tight, reverse the bolt 1/4 of a turn so that the pivot arm is free to rotate up and down. **[Repeat this process for the opposite side.]**

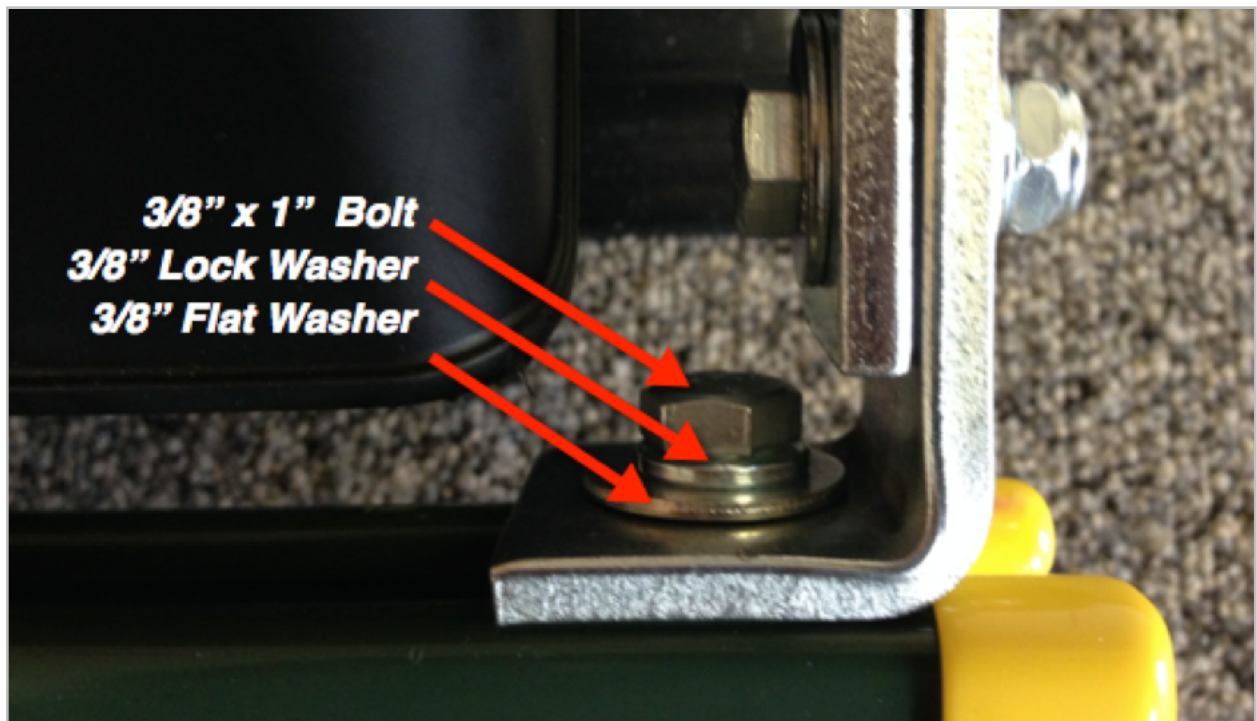


Step 5: Attach lower portion of mounting arm to roller

Lastly, in the gray support channel you will find two 3/8" x 1" bolts pre-installed in the roller with their corresponding locking 'channel nut'. Please temporarily remove the bolts and locking washers; leaving the channel nut in the channel.

Place both the locking washer and the flat washer on the bolt and then place the bolt through the lower portion of the mounting arms and hand tighten each of the bolts back into the channel nut(s) located inside the channel. Once you begin to tighten the bolts, the rectangular channel nut will 'lift' and bite/grip into the lower lip of the gray channel. Channel nuts are intended to be rotated 90 degrees once they are placed inside the channel and the 'teeth' of the nut serves as a locking mechanism when drawn into the channel lip. **Reference: The bottom side L brackets attaching the rollers to the bar are assembled in the same manner. (Please see photo on next page)**

Center the roller behind the machine by sliding the arms left or right along the channel. Once centered, firmly tighten in place with a 9/16" wrench.



Step 4: Final Adjustments

If the rear mower shroud/door catches on either of the 1" x 3/8" bolts, loosen and (slightly) adjust the mounting arm outward towards the protective end-cap. Installation is now complete.



Mounting Arms Assembled:

It is imperative that when you assemble your mounting arms, you put them together exactly as pictured below

