



1125 Mak-Tech Dr. Suite C.



Lansing, MI 48906



800.411.0150

[www.bigleaguelawns.com](http://www.bigleaguelawns.com)



### **CheckMate™ Gravelly ZT/ ZT-X/ ZT-XL Lawn Striping Kit**

#### **Important**

Big League Lawns, LLC warrants their products to be free of defects in material and workmanship. This warranty does not cover defects due directly or indirectly to misuse, abuse, normal wear and tear, failure to properly maintain the product or used for a purpose other than that for which it is intended. The duration of this warranty is expressly limited to one year parts and labor beginning from the date of delivery to the original customer.

The obligation of Big League Lawns, LLC is limited solely to the repair or replacement, at our option, at its factory or authorized repair agent of any part that should prove deficient. Purchaser must maintain the product under normal operating conditions at all times. Prior to operation, become familiar with the attachment and any disconnect features. This product is not intended to be used in a transport position or to be backed over curbs. When not in use, the product should be removed from the mower and transported in a safe manner. Failure to follow these instructions will void the warranty.



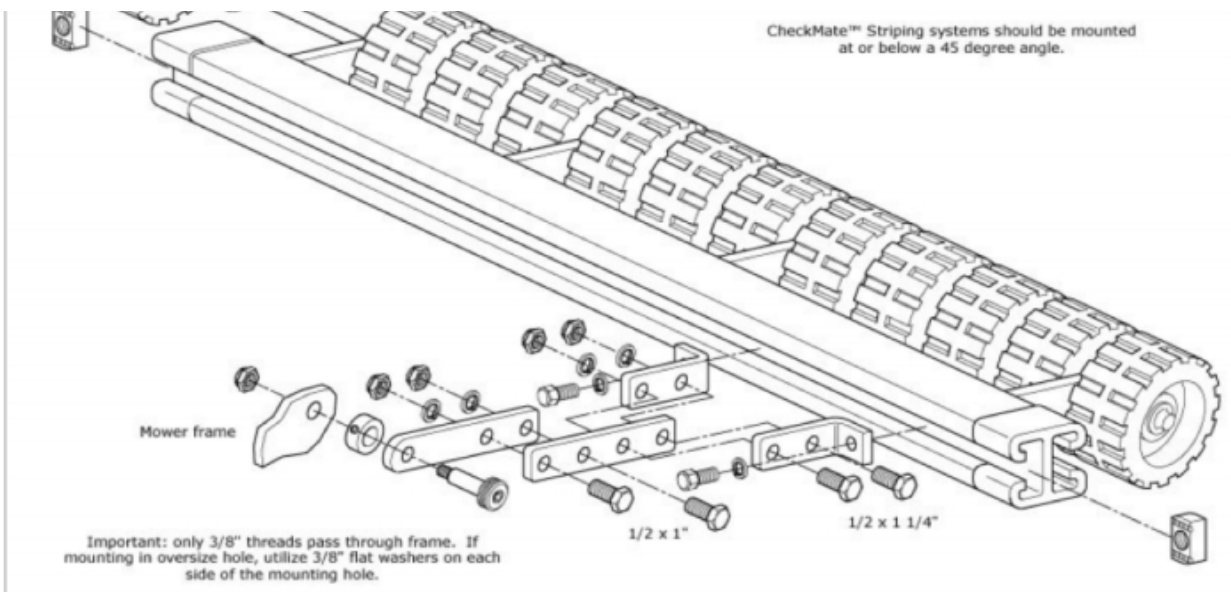
US Patent 6,962,039 B2, US Patent 6,993,894 B2

Congratulations on your new purchase! You are just steps away from creating a beautifully patterned lawn using your new CheckMate™ lawn striping roller. To ensure a long life of both your mower and roller, please be sure to follow the mounting recommendations below.



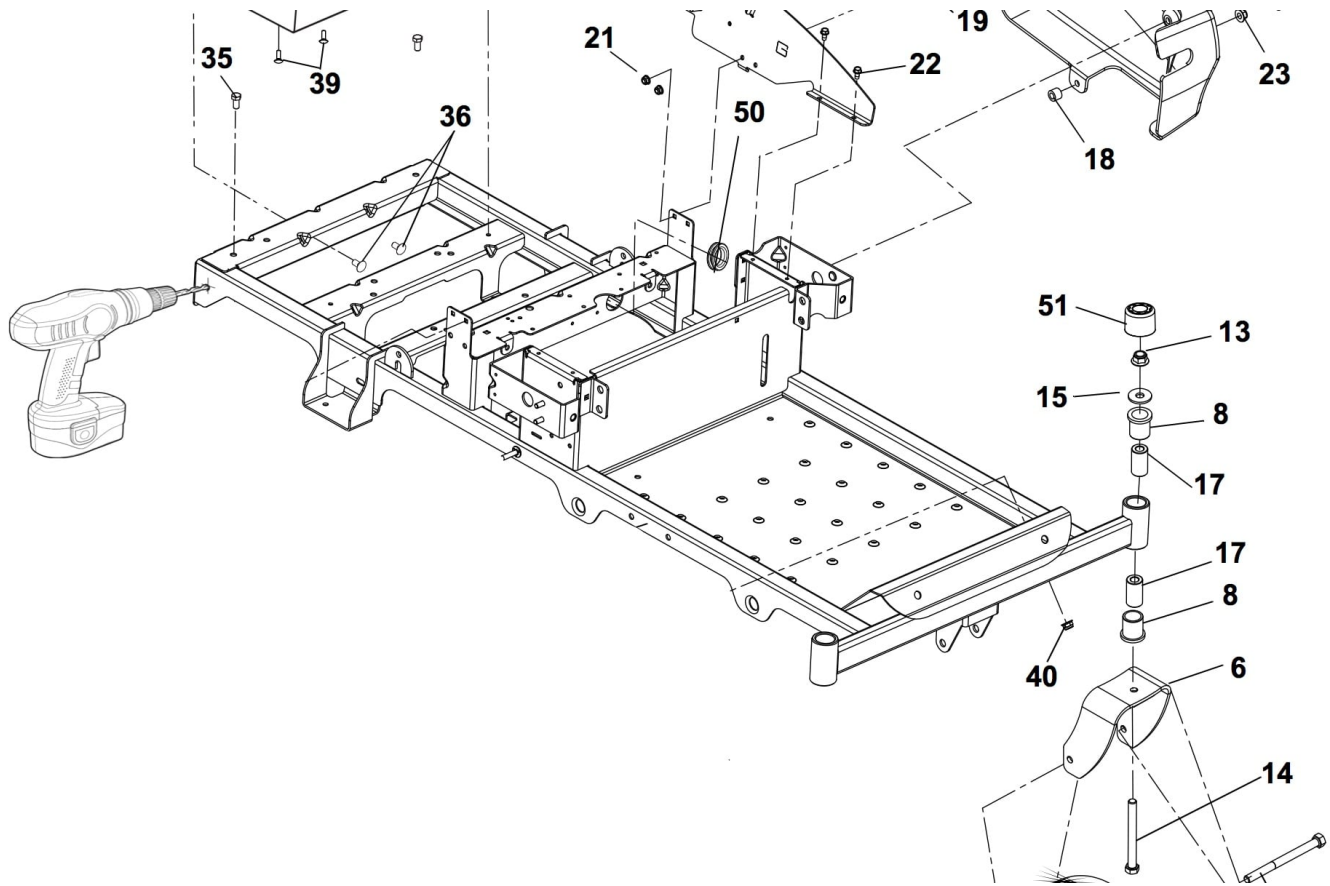
### ***Mounting Option D***

You will want to follow the schematic below to assemble your mounting arms.  
[Note: Schematic shows only one of two arms you will have to assemble. Simply repeat the process for the assembly of your second mounting arm.]

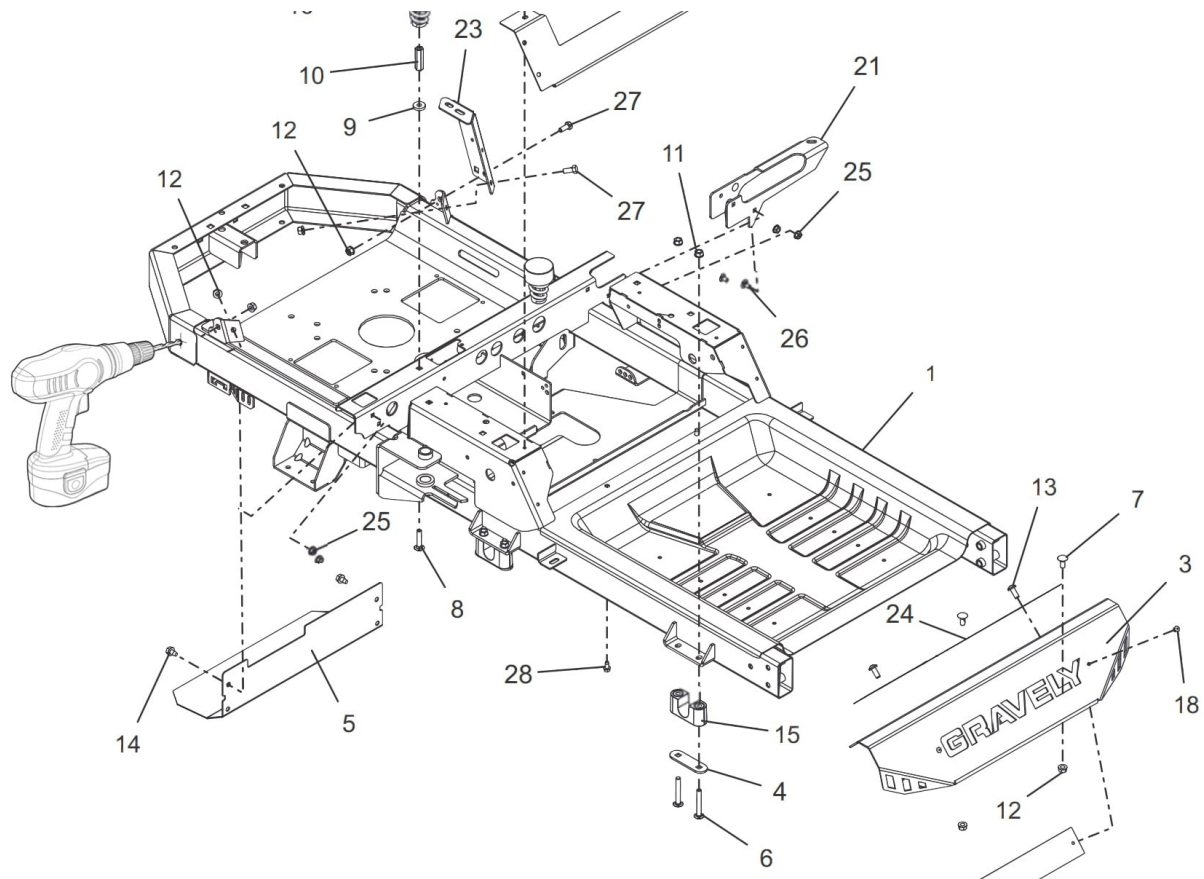




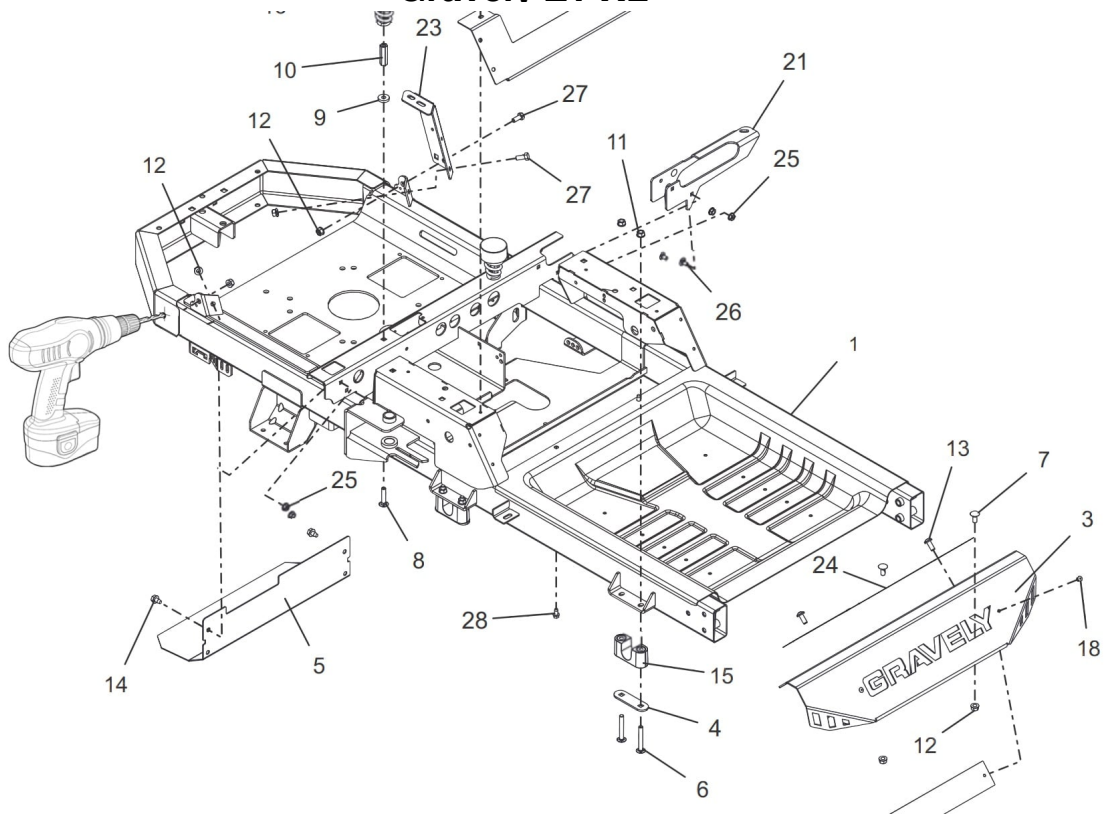
## Gravelly ZT



## Gravelly ZT-X



## Gravelly ZT-XL



Each of these mowers require a single 3/8" hole to be drilled on each side at the rear of the frame. Reference the schematics for exact hole locations.

Once drilled you will be ready to bolt your assembled mounting arms to your frame using the provided pivot bolts.



Installation is now complete! Enjoy your striping with your new CheckMate™ Stripping kit!