



1125 Mak-Tech Dr. Suite C

Lansing, MI 48906

800.411.0150

www.bigleaguelawns.com



CheckMate™ Gravelly Pro Turn/ 100/ 200/ 400 Lawn Striping Kit

Important

Big League Lawns, LLC warrants their products to be free of defects in material and workmanship. This warranty does not cover defects due directly or indirectly to misuse, abuse, normal wear and tear, failure to properly maintain the product or used for a purpose other than that for which it is intended. The duration of this warranty is expressly limited to one year parts and labor beginning from the date of delivery to the original customer.

The obligation of Big League Lawns, LLC is limited solely to the repair or replacement, at our option, at its factory or authorized repair agent of any part that should prove deficient. Purchaser must maintain the product under normal operating conditions at all times. Prior to operation, become familiar with the attachment and any disconnect features. This product is not intended to be used in a transport position or to be backed over curbs. When not in use, the product should be removed from the mower and transported in a safe manner. Failure to follow these instructions will void the warranty.



US Patent 6,962,039 B2, US Patent 6,993,894 B2

Congratulations on your new purchase! You are just steps away from creating a beautifully patterned lawn using your new CheckMate™ lawn striping roller. To ensure a long life of both your mower and roller, please be sure to follow the mounting recommendations below.



If you should have any questions regarding the use of a particular mounting method, please do not hesitate to contact us at 800.411.0150 or via email at sales@bigleaguelawns.com.

Important: If you purchased your striping kit through a 3^d party vendor and have any questions regarding your mounting options, please do not hesitate to contact us. We have a great wealth of knowledge, tips and tricks, which may be helpful. Unfortunately, when we receive purchase orders via 3^d party vendors we do not know in advance what mower the roller is being attached to.

Thank you,

Big League Lawns, LLC

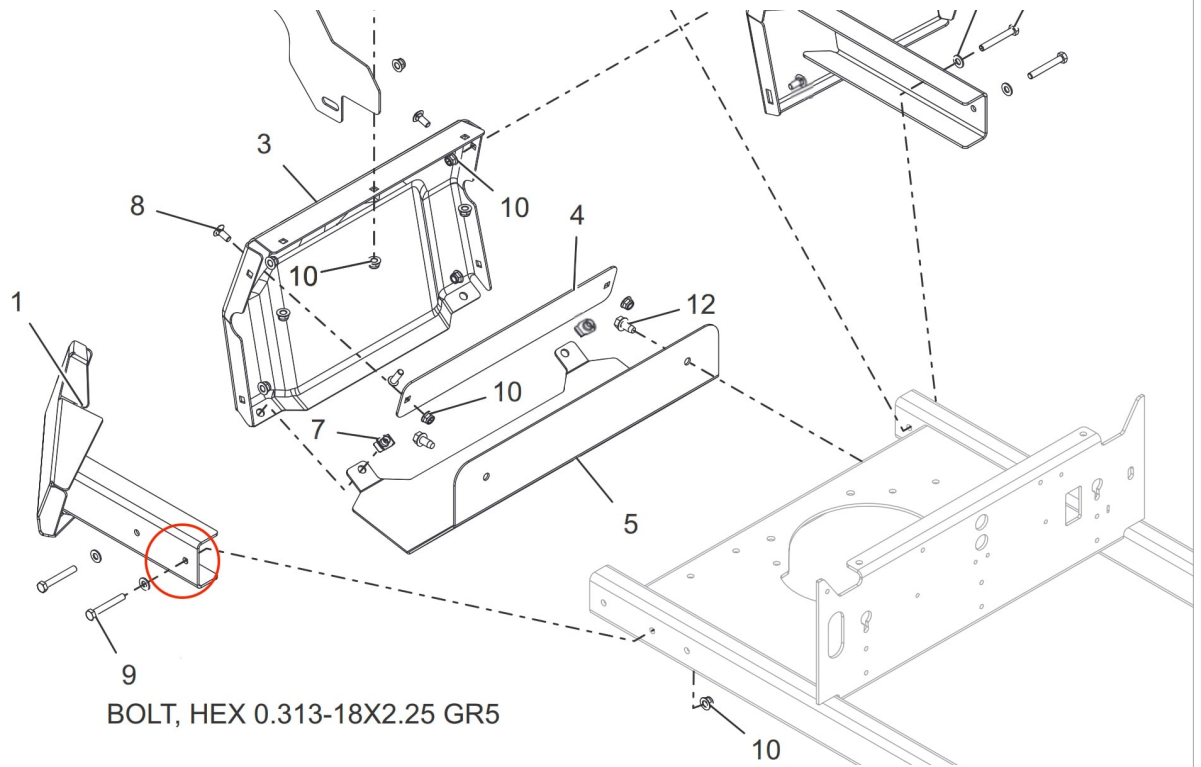
When Mowing Isn't Enough... Let it Roll!

US Patent 6,962,039 B2

US Patent 6,993,894 B2

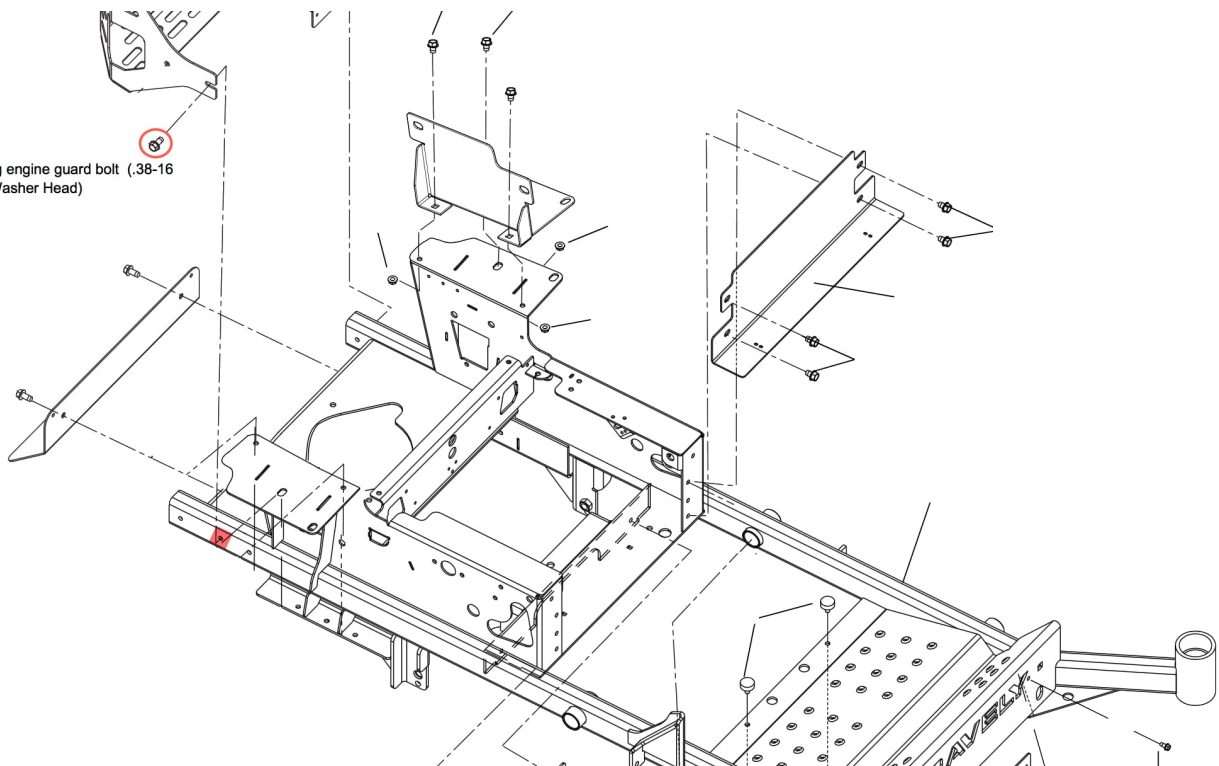
FEIN 38-3198349

Pro Turn



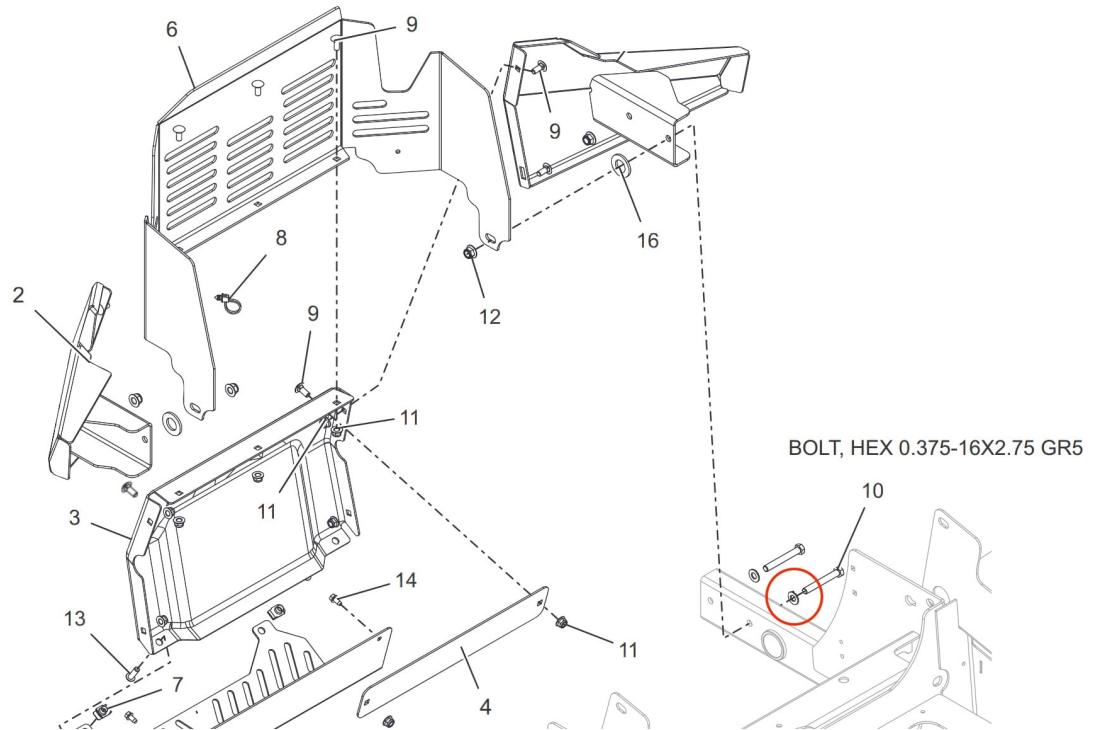
BOLT, HEX 0.313-18X2.25 GR5

Pro Turn 100

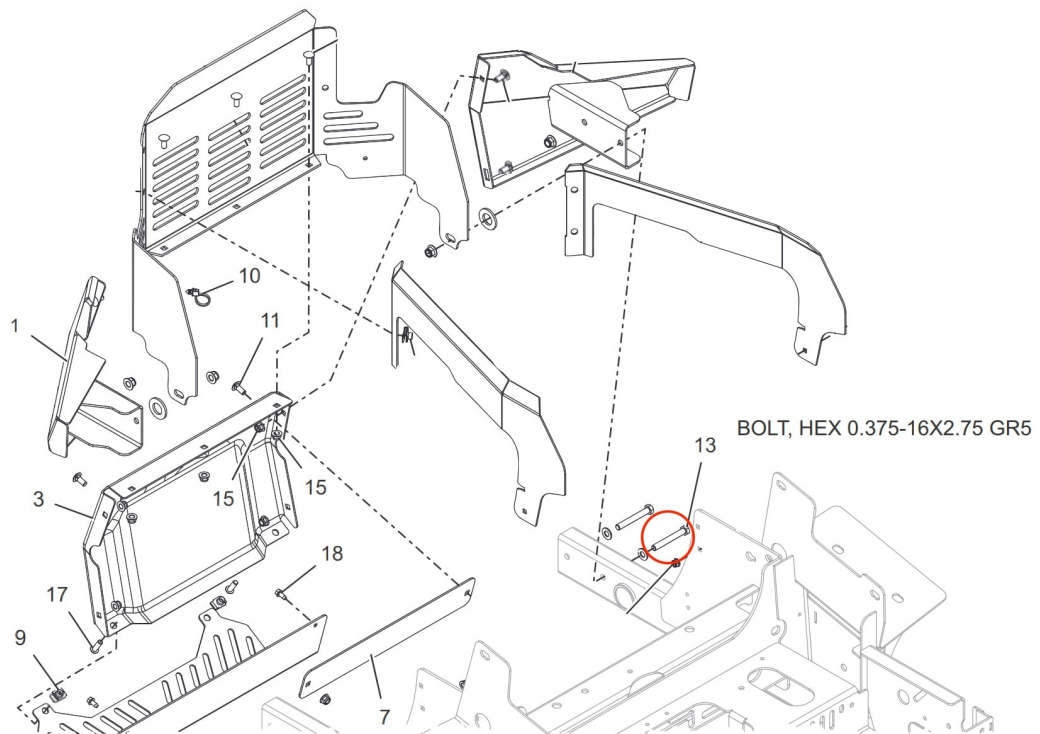


Use existing engine guard bolt (.38-16 x .75 Hex Washer Head) to connect

Pro Turn 200



Pro Turn 400

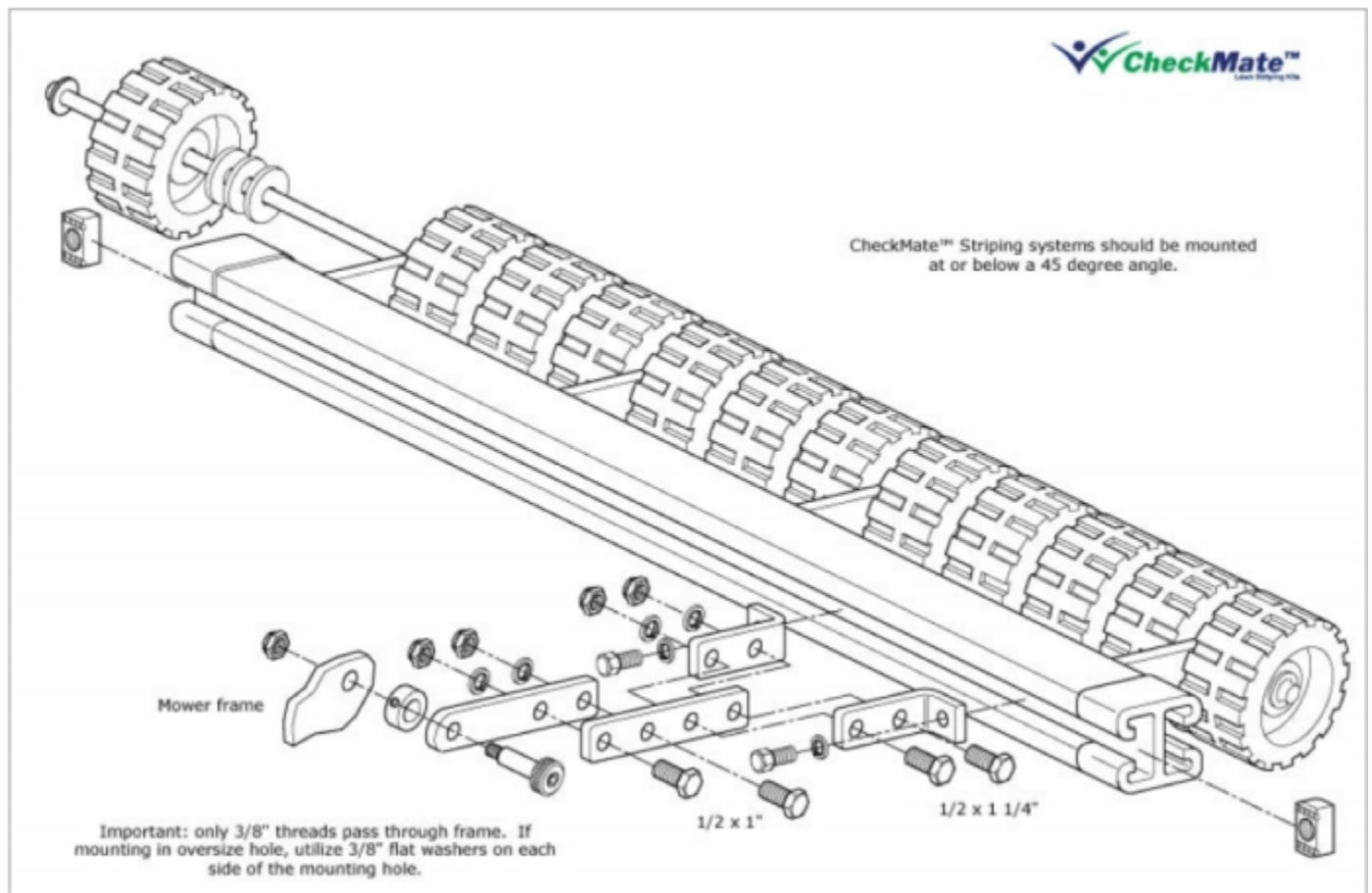


Note: If you ordered Universal Side Mount Quick Release you can find those instructions at the back of this packet

Mounting Option D

You will want to follow the schematic below to assemble your mounting arms.

[Note: Schematic shows only one of two arms you will have to assemble. Simply repeat the process for the assembly of your second mounting arm.]



Coupling Process

The coupling process is identical for all mowers, regardless of model or type.

All Gravely Pro Turn Zero Turn frames have existing 3/8" x 1" Bolts that will need to be reversed so that the bolts threads will be facing away from your mower on each side.

From there you can thread your provided coupler nut on to your mower's existing bolt; the provided pivot bolts will then thread into the other side of the coupler nut.
(Reference photo guide below)

(1) Acquire Hole



(2) Install bolt



(3) Add lock washer



(4) Tighten coupler nut



(5) Thread pivot bolt



(6) Tighten pivot bolt



Installation is now complete! Enjoy your striping with your new CheckMate™ Striping kit!



Mounting Instructions Universal Side Mount Quick Release Plates



Important

Big League Lawns, LLC warrants their products to be free of defects in material and workmanship. This warranty does not cover defects due directly or indirectly to misuse, abuse, normal wear and tear, failure to properly maintain the product or used for a purpose other than that for which it is intended. The duration of this warranty is expressly limited to one year parts and labor beginning from the date of delivery to the original customer.

The obligation of Big League Lawns, LLC is limited solely to the repair or replacement, at our option, at its factory or authorized repair agent of any part that should prove deficient. Purchaser must maintain the product under normal operating conditions at all times. Prior to operation, become familiar with the attachment and any disconnect features. This product is not intended to be used in a transport position or to be backed over curbs. When not in use, the product should be removed from the mower and transported in a safe manner. Failure to follow these instructions will void the warranty.

Tools Required: For this installation you will need the following tools.



CheckMate™ Hardware



Drill
(*Depends on
mower.)



3/8" Drill Bit
(*Depends
on mower.)



1/8" wrench
or socket
and
3/4" wrench
or socket

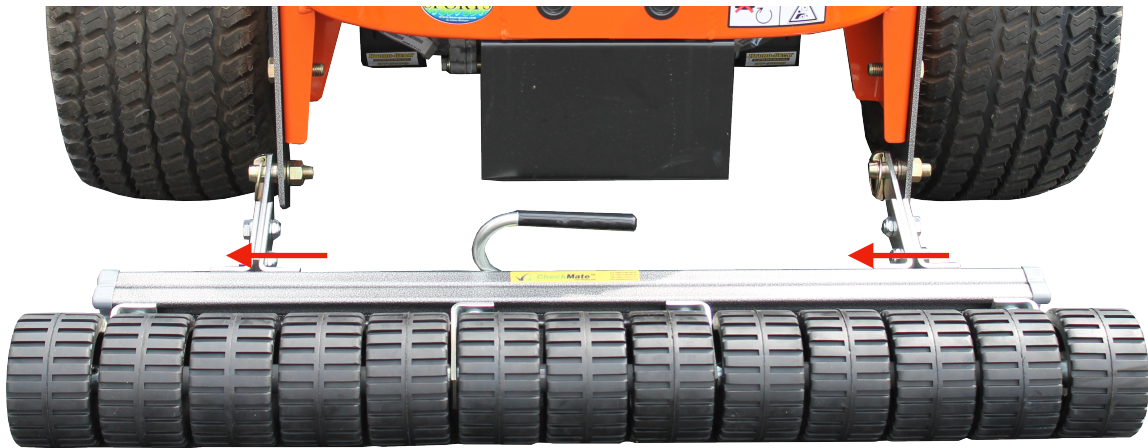
Step 1: Locate the Mounting Location

Attach the Quick Release plates to the side framing at the back of the machine. Some mowers will have existing bolts or existing holes that will line up with the plates. If you do not have either of these, (2) 3/8" holes will need to be drilled into the machine in order to properly mount the plates.



Step 2: Mount Plates

Use the hardware included with the Quick Release plates to attach them to the frame with existing holes or newly drilled holes (3/8"). Note that when you attach the Quick Release plates, the stabilizer pins must be facing in the same direction so that the CheckMate™ striping kit will be able to properly slide on and off in the same direction. (See Example)

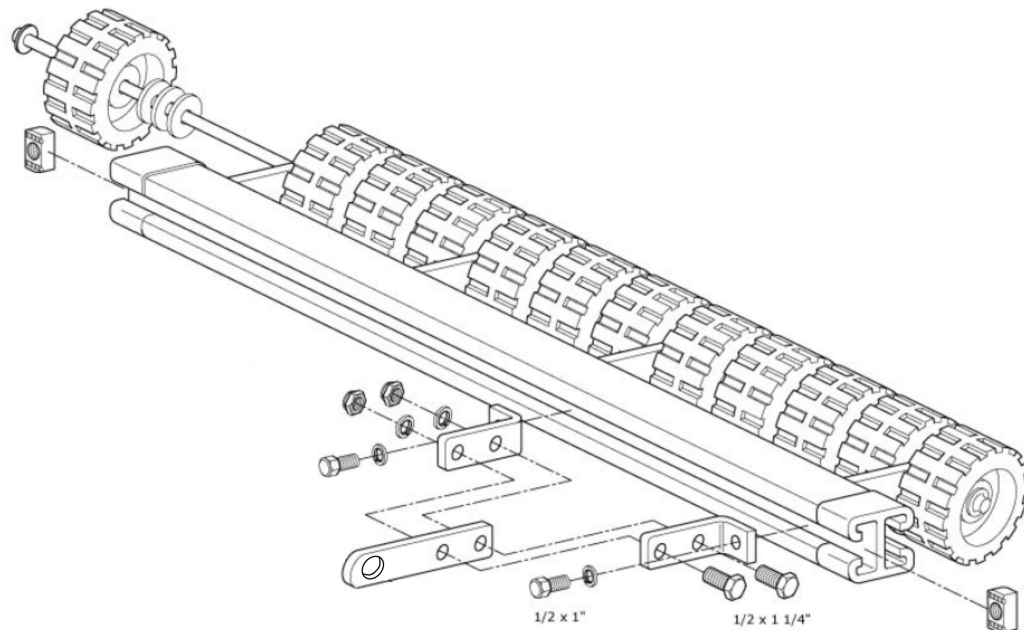


E.G. Both pins facing to the left in this example.

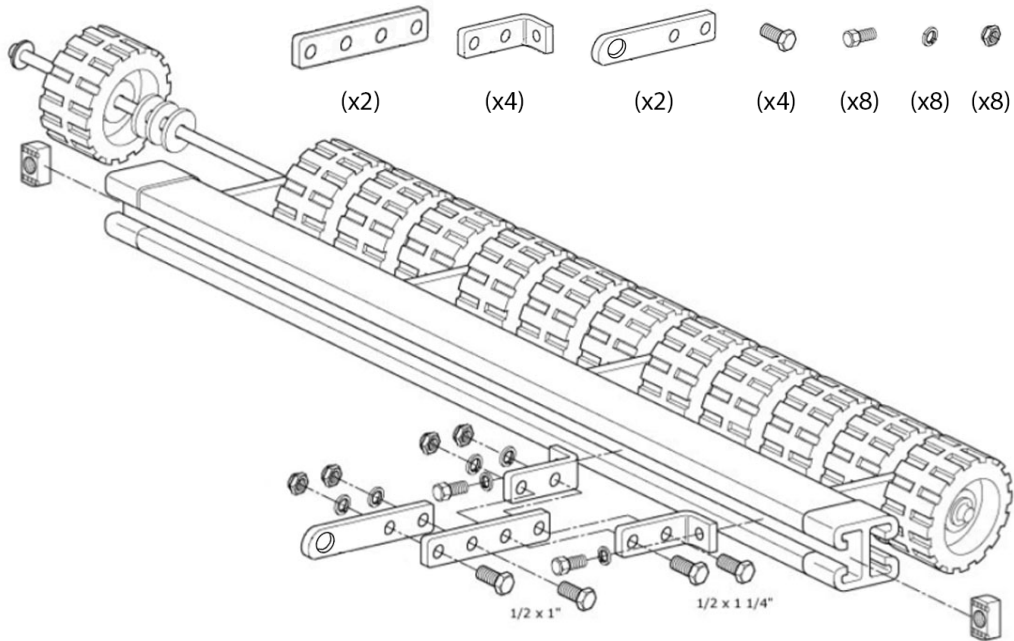
Step 3: Assemble Hardware

Please refer to the schematic below in order to assemble the mounting arms. If you need extra clearance, use Option B below. *Note: Only finger tighten the bolts that secure the arms to the supporting channel piece for now, so that you can center the roller behind the machine before securing the arms to the channel.

Option A:



Option B:



Step 4: Center the CheckMate™ behind the machine.

Once you have the mounting arms assembled and placed on the roller, adjust the roller side to side until it is centered behind the mower. Once you have centered the CheckMate™ stripping kit, you can proceed to tighten the mounting arms to the grey channel piece.



Installation is now complete! Enjoy your striping with your new CheckMate™ Stripping kit!