



CheckMate™ Lawn and Athletic Field Striping Kits

1125 Mak Tech Dr. Suite C

Lansing, MI 48906

800.411.0150

www.bigleaguelawns.com



CheckMate™ Lawn Striping Kit For Ferris FW25 Installation Guide

Important

Big League Lawns, LLC warrants their products to be free of defects in material and workmanship. This warranty does not cover defects due directly or indirectly to misuse, abuse, normal wear and tear, failure to properly maintain the product or used for a purpose other than that for which it is intended. The duration of this warranty is expressly limited to one year parts and labor beginning from the date of delivery to the original customer.

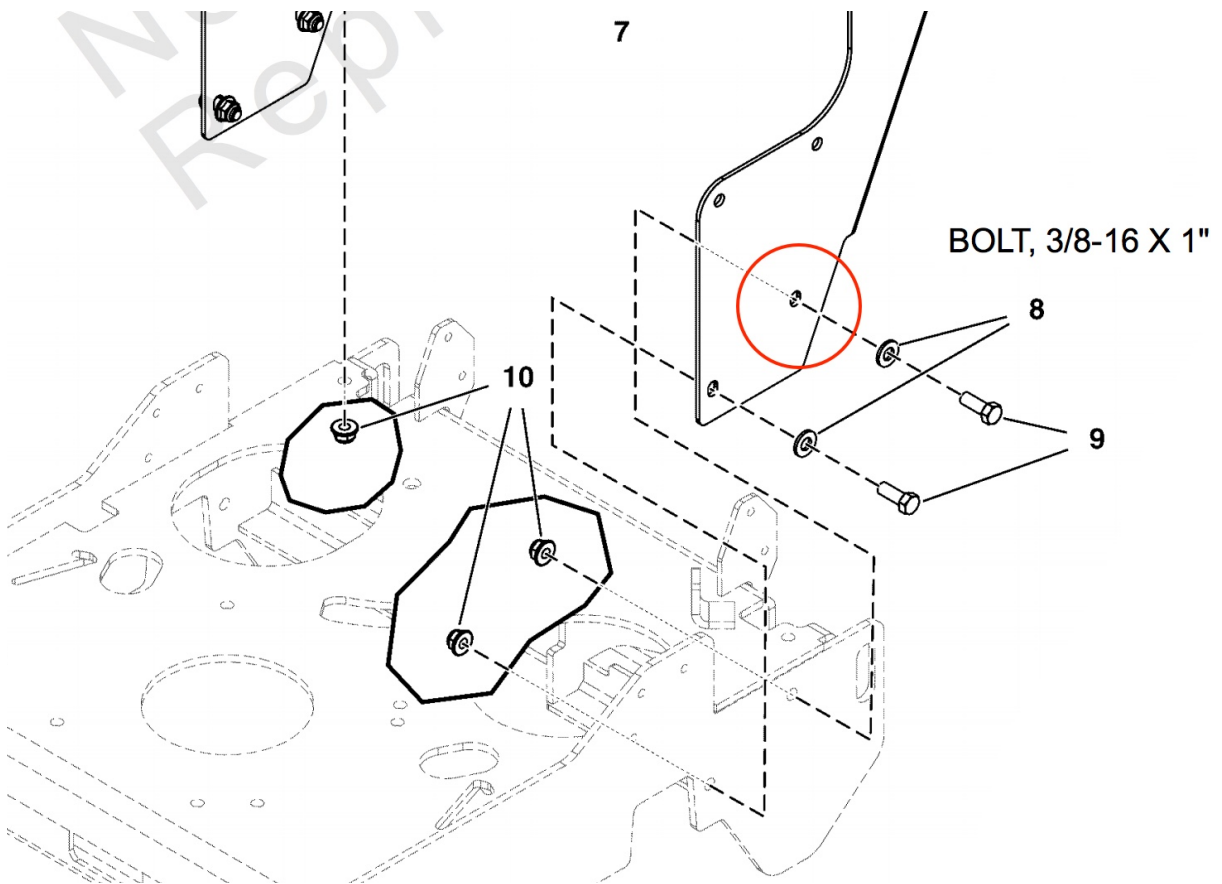
The obligation of Big League Lawns, LLC is limited solely to the repair or replacement, at our option, at its factory or authorized repair agent of any part that should prove deficient. Purchaser must maintain the product under normal operating conditions at all times. Prior to operation, become familiar with the attachment and any disconnect features. This product is not intended to be used in a transport position or to be backed over curbs. When not in use, the product should be removed from the mower and transported in a safe manner. Failure to follow these instructions will void the warranty.



US Patent 6,962,039 B2, US Patent 6,993,894 B2

Mounting Instructions Ferris FW25 Series Mowers

Congratulations on your new purchase! You are just steps away from creating a beautifully patterned lawn using your new CheckMate™ lawn striping roller. To ensure a long life of both your mower and roller, please be sure to follow the mounting recommendations below.



Tools Required:

1/2" Wrench

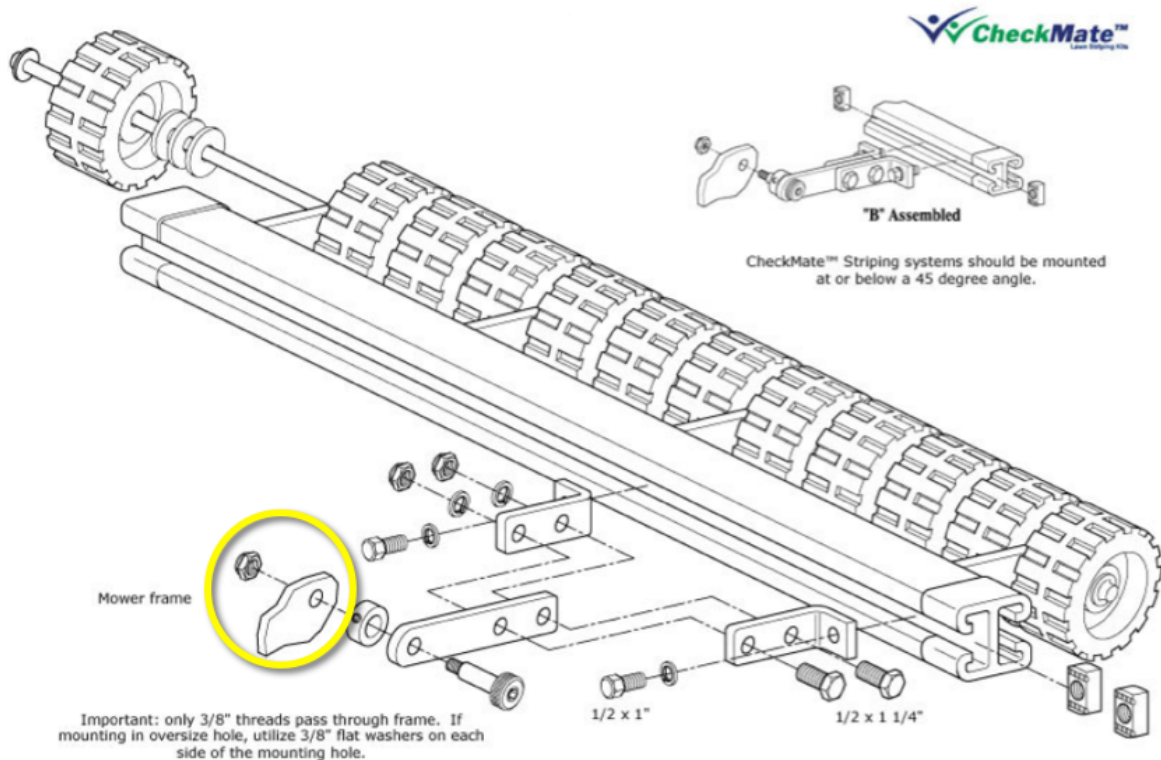


1/4" Allen Wrench



Directions

Important: Only the 3/8" threaded portion of your pivot bolt threads pass through the mower frame. If you are mounting to an oversize hole, please place a 3/8" flat washer on the pivot bolt **threads** to prevent the smooth portion of this bolt from passing through your frame.



Unit is shipped with two 3/8" to 3/8" Coupler Nuts. To install, you must reverse the noted bolt (circled on second page) on each side of your mower so that the threads point outward towards the tires.

You will then re-secure the bolt by attaching the 3/8" coupler nut. The opposite end of the coupler nut will have the 3/8" threads necessary to connect the CheckMate™. This allows for a no drill application.

Refer To The Last Page For Coupler Installation Guide

Sample Coupling Process

(1) Acquire Hole



(2) Install bolt



(3) Add lock washer



(4) Tighten coupler nut



(5) Thread pivot bolt



(6) Tighten pivot bolt

