



CheckMate™ Lawn and Athletic Field Striping Kits

1125 Mak-Tech Dr. Suite C



Lansing, MI 48906



800.411.0150

www.bigleaguelawns.com



CheckMate™ Dixie Chopper Zero Turns Lawn Striping Kit Installation Guide

Important

Big League Lawns, LLC warrants their products to be free of defects in material and workmanship. This warranty does not cover defects due directly or indirectly to misuse, abuse, normal wear and tear, failure to properly maintain the product or used for a purpose other than that for which it is intended. The duration of this warranty is expressly limited to one year parts and labor beginning from the date of delivery to the original customer.

The obligation of Big League Lawns, LLC is limited solely to the repair or replacement, at our option, at its factory or authorized repair agent of any part that should prove deficient. Purchaser must maintain the product under normal operating conditions at all times. Prior to operation, become familiar with the attachment and any disconnect features. This product is not intended to be used in a transport position or to be backed over curbs. When not in use, the product should be removed from the mower and transported in a safe manner. Failure to follow these instructions will void the warranty.



Congratulations on your new purchase! You are just steps away from creating a beautifully patterned lawn using your new CheckMate™ lawn striping roller. To ensure a long life of both your mower and roller, please be sure to follow the mounting recommendations within this packet.



If you should have any questions regarding the use of a particular mounting method, please do not hesitate to contact us at 800.411.0150 or via email at sales@bigleaguelawns.com.

Important: If you purchased your striping kit through a 3rd party vendor and have any questions regarding your mounting options, please do not hesitate to contact us. We have a great wealth of knowledge, tips and tricks, which may be helpful. Unfortunately, when we receive purchase orders via 3rd party vendors we do not know in advance what mower the roller is being attached to.

Thank you,

Big League Lawns, LLC

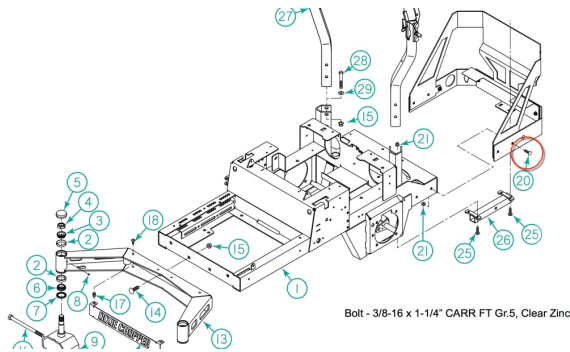
When Mowing Isn't Enough... Let it Roll!

US Patent 6,962,039 B2

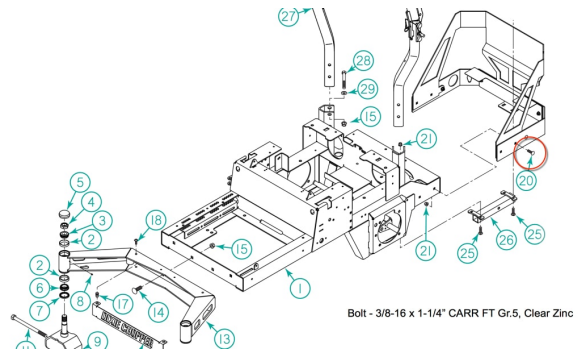
US Patent 6,993,894 B2

FEIN 38-3198349

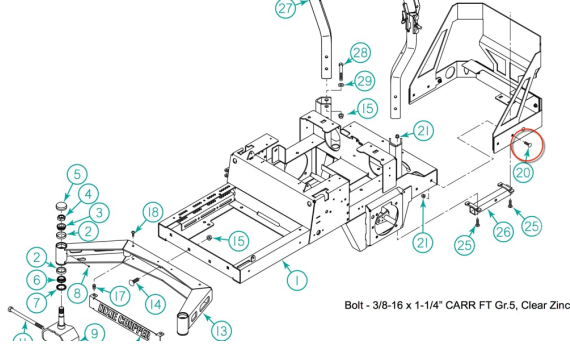
Blackhawk



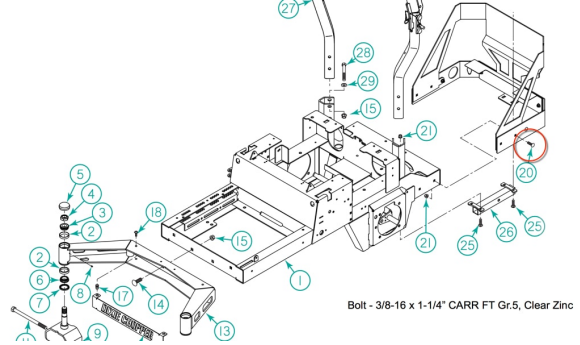
Blackhawk HP



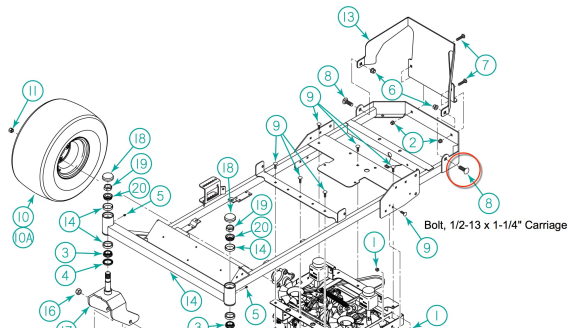
Eagle



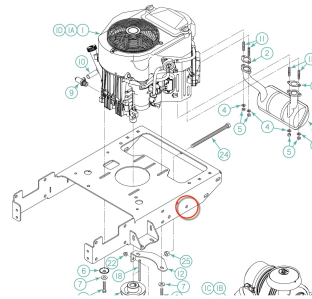
Eagle HP



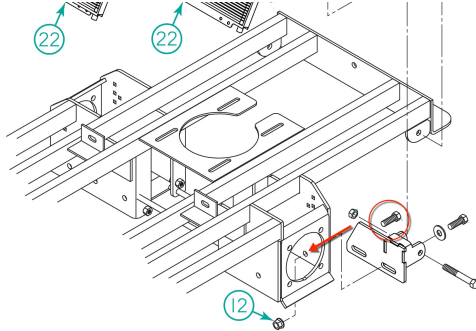
Zee 2



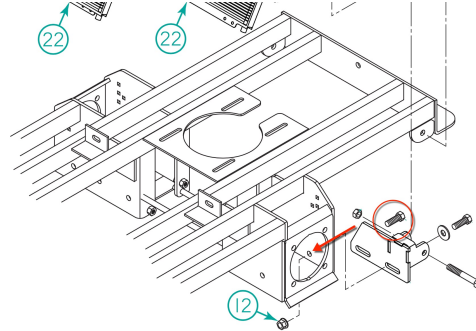
Magnum



Classic



XCaliber





Example Mount:

All Dixie Chopper Zero Turns will be utilizing the below mounting process except the Classic and XCaliber. See the specific mounting instructions for the Classic and XCaliber at the back of this packet.



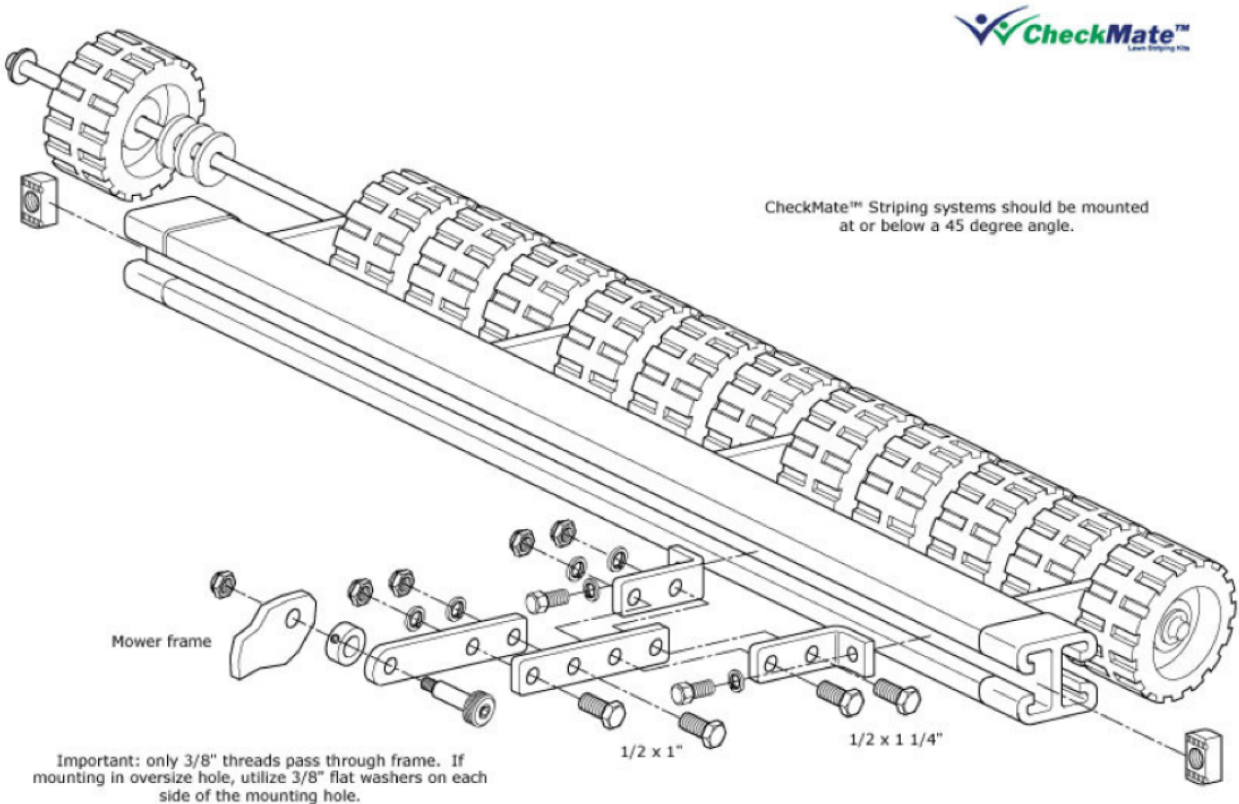


Installation Process & Mounting Option:

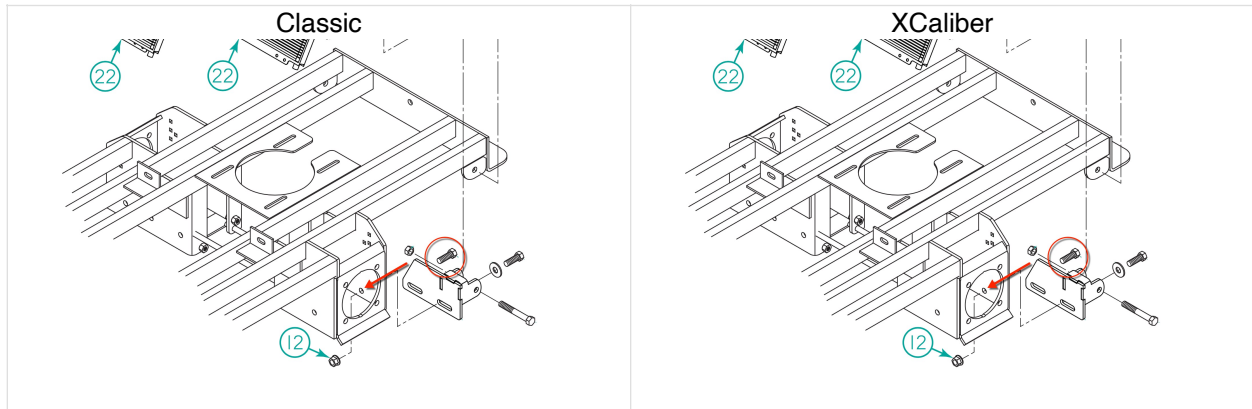
Remove the red circled existing bolts in each side of your frame/ engine guard and replace it with the provided pivot bolts

Utilize Mounting Option D to assemble your mounting arms.

Mounting Option D

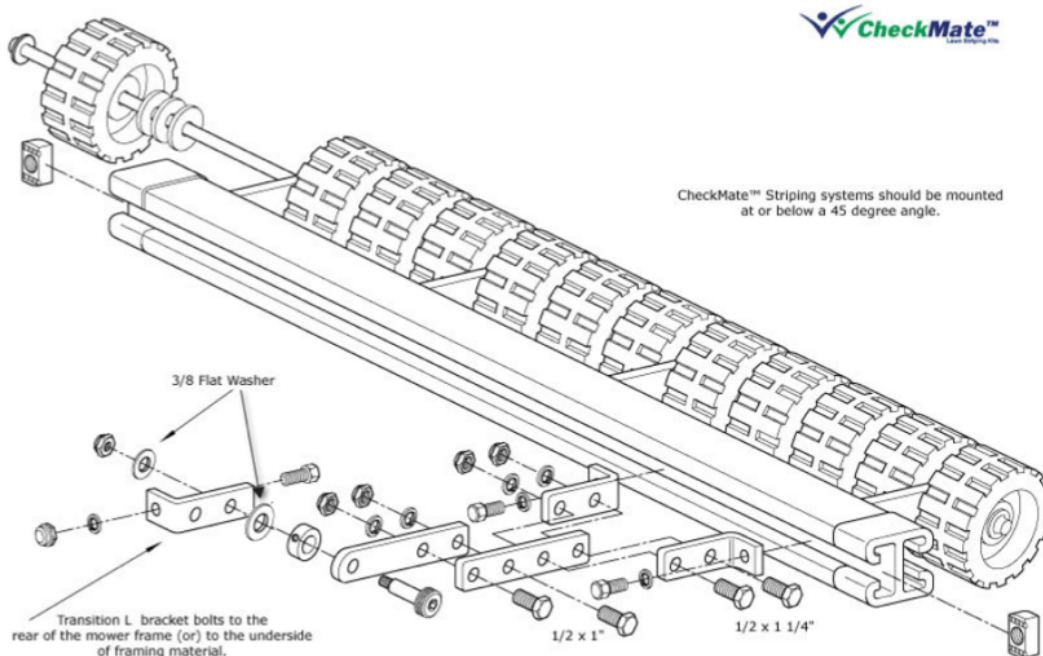


Classic and XCaliber Mounting Process



These mowers will utilize the mounting option below, you will be bolting two L-Brackets directly to your mower's frame at the marked location on the schematics above using the existing bolts found in your frame. You will then bolt your mounting arms to the L-Brackets instead of drilling a mounting hole. The schematic below shows how this will look.

Important: Only the 3/8" threaded portion of your pivot bolt threads pass through the bottom hole of the transition L bracket. Please place a 3/8" flat washer on the pivot bolt **threads** to prevent the smooth portion of this bolt from passing through the bracket.



Installation is now complete! Enjoy striping with your new CheckMate™ Stripping kit!