



CheckMate™ Lawn and Athletic Field Striping Kits

1125 Mak-Tech Dr



Lansing, MI 48906



800.411.0150

www.bigleaguelawns.com



CheckMate™ Bobcat Zero Turns Lawn Striping Kit Installation Guide

Important

Big League Lawns, LLC warrants their products to be free of defects in material and workmanship. This warranty does not cover defects due directly or indirectly to misuse, abuse, normal wear and tear, failure to properly maintain the product or used for a purpose other than that for which it is intended. The duration of this warranty is expressly limited to one year parts and labor beginning from the date of delivery to the original customer.

The obligation of Big League Lawns, LLC is limited solely to the repair or replacement, at our option, at its factory or authorized repair agent of any part that should prove deficient. Purchaser must maintain the product under normal operating conditions at all times. Prior to operation, become familiar with the attachment and any disconnect features. This product is not intended to be used in a transport position or to be backed over curbs. When not in use, the product should be removed from the mower and transported in a safe manner. Failure to follow these instructions will void the warranty.



Congratulations on your new purchase! You are just steps away from creating a beautifully patterned lawn using your new CheckMate™ lawn striping roller. To ensure a long life of both your mower and roller, please be sure to follow the mounting recommendations within this packet.



If you should have any questions regarding the use of a particular mounting method, please do not hesitate to contact us at 800.411.0150 or via email at sales@bigleaguelawns.com.

Important: If you purchased your striping kit through a 3rd party vendor and have any questions regarding your mounting options, please do not hesitate to contact us. We have a great wealth of knowledge, tips and tricks, which may be helpful. Unfortunately, when we receive purchase orders via 3rd party vendors we do not know in advance what mower the roller is being attached to.

Thank you,

Big League Lawns, LLC

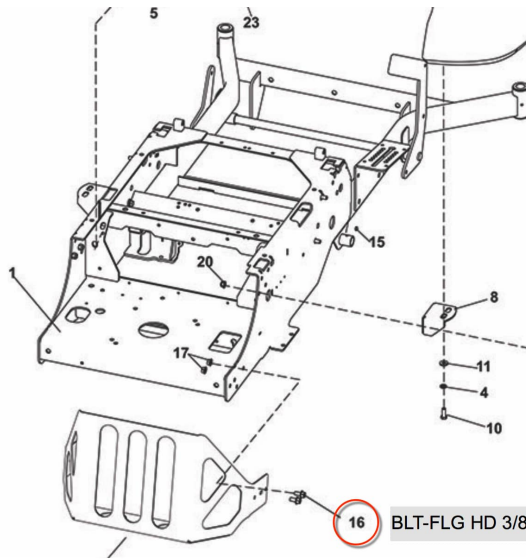
When Mowing Isn't Enough... Let it Roll!

US Patent 6,962,039 B2

US Patent 6,993,894 B2

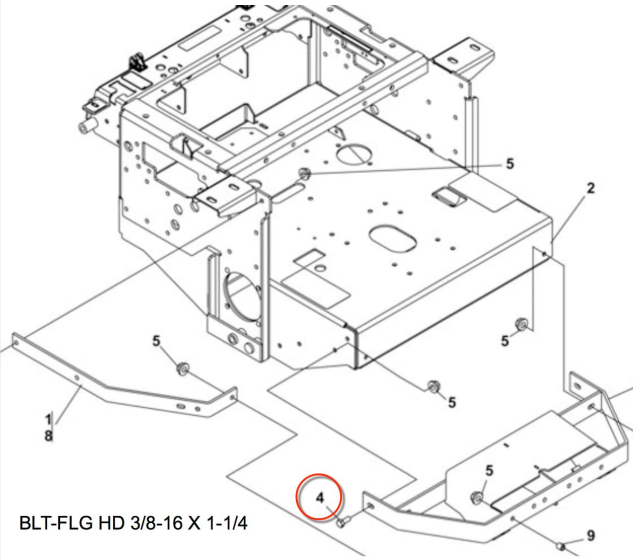
FEIN 38-3198349

ZT2000 / 3000 | CRZ / XRZ / XRZ Pro
Pro RS/ FastCat | Pro RS / SE



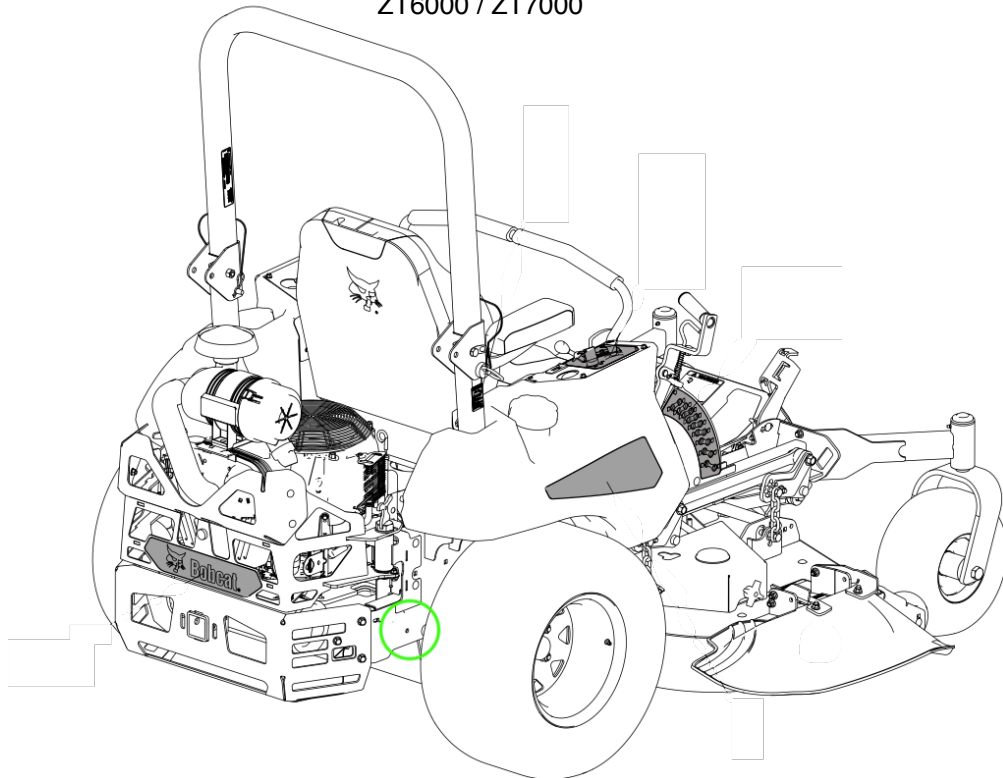
BLT-FLG HD 3/8

ProCat RS



BLT-FLG HD 3/8-16 X 1-1/4

ZT6000 / ZT7000





Example Mount:

Mounting Option B is pictured below, this specific mount utilizes four L-Brackets and two Pivot arms.

You can also utilize Mounting Option D (Pictured on the next page) if you need your mounting arms to be longer. Option D utilizes everything in Option B plus two extension arms to give you additional clearance.





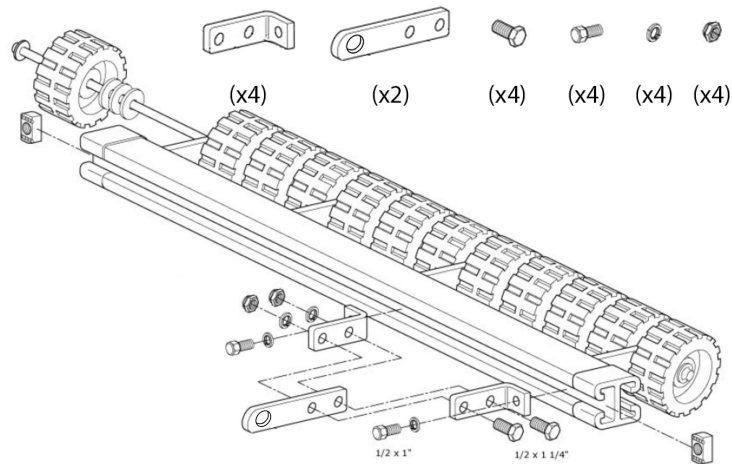
Installation Process & Mounting Options:

Reverse bolt at noted location so that the threads point outward. Attach 3/8" straight "coupler nut" and secure to the frame.

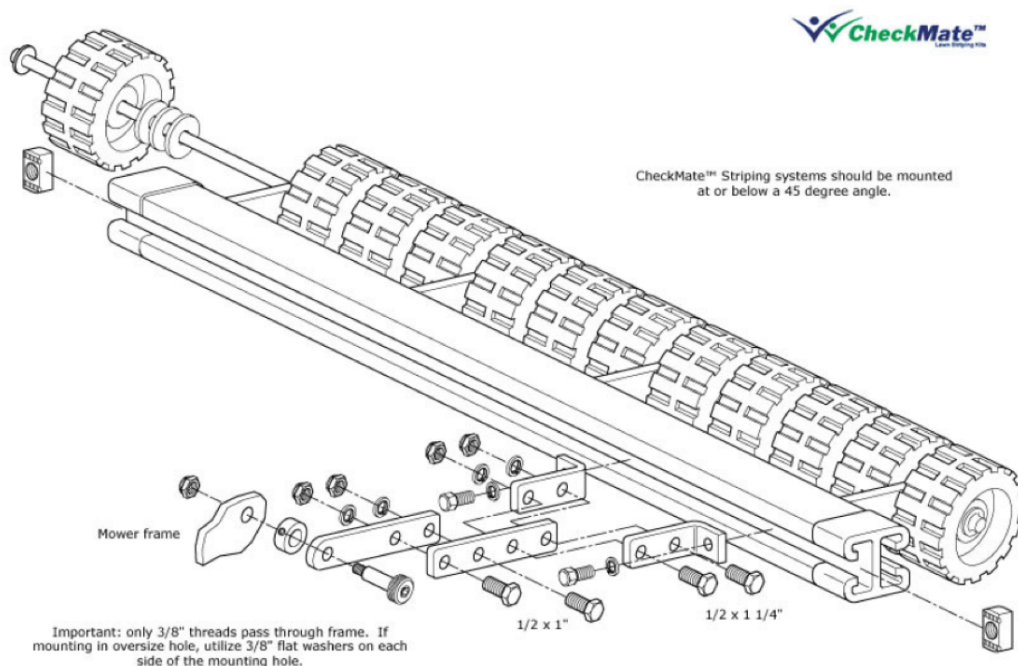
Coupling Example: See Coupling Instructions on the back page of this instruction packet.

Utilize Mounting Option B or D to assemble your mounting arms

Mounting Option B



Mounting Option D





Sample Coupling Process

Often times mowers will have existing bolts located in the side framing of the machine. If this is a bolt which we are confident we can attach the striping kit, you will find 'coupler nuts' with instructions attached to this instruction manual. The coupling process is identical for all mowers, regardless of make, model or type.

(1) Acquire Hole



(2) Install bolt



(3) Add lock washer



(4) Tighten coupler nut



(5) Thread pivot bolt



(6) Tighten pivot bolt



**Installation is now complete! Enjoy striping with your new
CheckMate™ Striping kit!**