



CheckMate™ Lawn and Athletic Field Striping Kits

1125 Mac Tek Dr C



Lansing, MI 48906



800.411.0150

www.bigleaguelawns.com



CheckMate™ Lawn Striping Kit For Toro Heavy Duty 21"/ Exmark Commercial 21" Installation Guide

Important

Big League Lawns, LLC warrants their products to be free of defects in material and workmanship. This warranty does not cover defects due directly or indirectly to misuse, abuse, normal wear and tear, failure to properly maintain the product or used for a purpose other than that for which it is intended. The duration of this warranty is expressly limited to one year parts and labor beginning from the date of delivery to the original customer.

The obligation of Big League Lawns, LLC is limited solely to the repair or replacement, at our option, at its factory or authorized repair agent of any part that should prove deficient. Purchaser must maintain the product under normal operating conditions at all times. Prior to operation, become familiar with the attachment and any disconnect features. This product is not intended to be used in a transport position or to be backed over curbs. When not in use, the product should be removed from the mower and transported in a safe manner. Failure to follow these instructions will void the warranty.



US Patent 6,962,039 B2, US Patent 6,993,894 B2

Mounting Instructions

Toro Heavy Duty 21"/ Exmark Commercial 21" Mowers

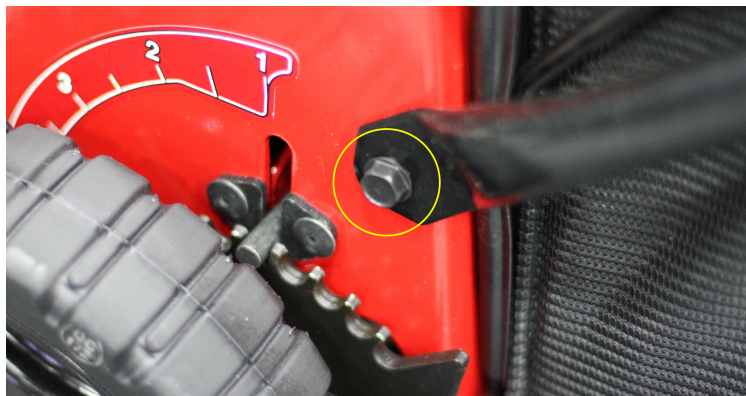
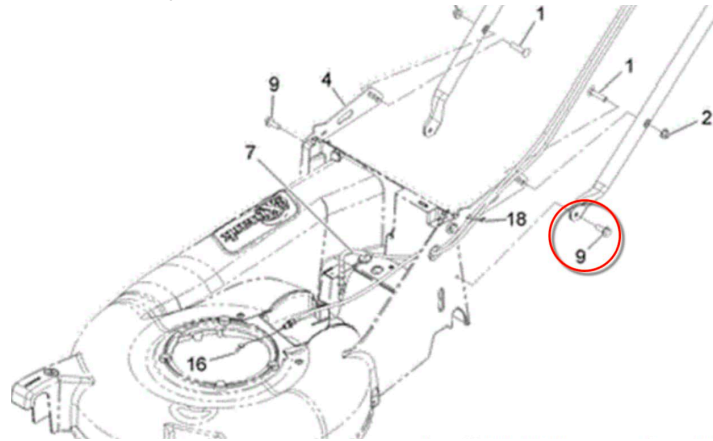
Congratulations on your new purchase! You are just steps away from creating a beautifully patterned lawn using your new CheckMate™ lawn striping roller. To ensure a long life of both your mower and roller, please be sure to follow the mounting recommendations below.

Tools Required:

1/2" Wrench or Socket	9/16" Wrench or Socket	3/4" Wrench or Socket
		

Step 1: Remove Existing Bolt

Using a 9/16" socket or wrench, turn the bolt counter clockwise and remove it from the frame of the mower.



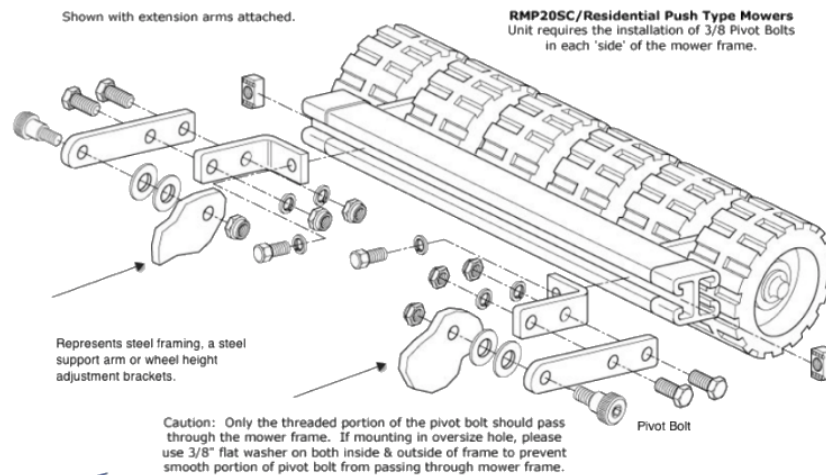
Step 2: Assemble Mounting Arm

Utilize Schematic

Please utilize the schematic and photo below to assemble your mounting arm. The mounting arm must be assembled exactly as pictured for the striping kit to function properly.

Important: Only the 3/8" threaded portion of your pivot bolt threads pass through the mower frame, support arm or wheel height adjustment bracket. If you are mounting to an oversize hole, please place a 3/8" flat washer on the pivot bolt threads to prevent the smooth portion of this bolt from passing through your frame.

***Shown without extension arms.**

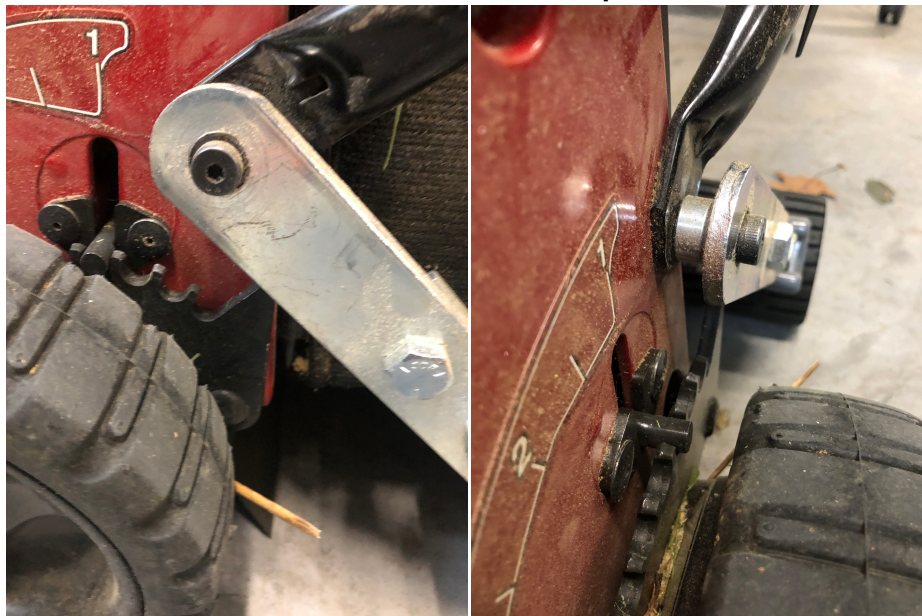


Step 3: Install Mounting Arm

Coat your Mounting/Pivot bolt threads with Provided Blue Loctite. Place the new mounting bolt (Pivot Bolt) into the exposed hole from Step 1. Thread in with your fingers and use the provided 1/4" Allen Key turning clockwise to secure the bolt to the mower frame.

Note: If the mounting arm is not able to freely move up and down, reverse the bolt 1/4 turn so that it is secure but is still able to function properly.

Arm installation example

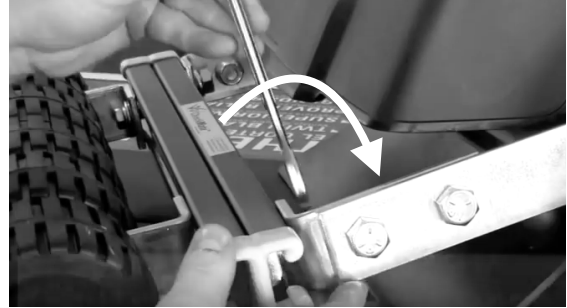


Step 4: Repeat Steps 1-3 For Opposite Side of Mower

Step 5: Install Striping Kit

Remove preinstalled 1/2" x 1" bolts and lock washers from gray channel. Re-insert the bolt [with split lock washer] through the L shaped bracket and thread into the channel nut inside channel. **(Before tightening bolts all the way down; center roller behind the mower)**

After centering the roller; use a 3/4" wrench to firmly tighten each mounting arm to the striping roller.



Final Steps

Check installation, pick up the roller to confirm it freely pivots up and down. Also reinstall bagger to mower if desired. (Example photo below, pictured mower uses a different mounting option)



Installation is now complete! Enjoy striping with your new CheckMate TM Striping kit!

If you have any questions or concerns, feel free to reach out to us!

Phone: (800) 411-0150

Email: sales@bigleaguelawns.com