



1161 E. Clark Road, Suite #220

◆ DeWitt, MI 48820

◆ 800.411.0150

[www.bigleaguelawns.com](http://www.bigleaguelawns.com)



### CheckMate™ Lawn Striping Kit Installation Guide for Toro TimeCutter

#### Important

Big League Lawns, LLC warrants their products to be free of defects in material and workmanship. This warranty does not cover defects due directly or indirectly to misuse, abuse, normal wear and tear, failure to properly maintain the product or used for a purpose other than that for which it is intended. The duration of this warranty is expressly limited to one year parts and labor beginning from the date of delivery to the original customer.

The obligation of Big League Lawns, LLC is limited solely to the repair or replacement, at our option, at its factory or authorized repair agent of any part that should prove deficient. Purchaser must maintain the product under normal operating conditions at all times. Prior to operation, become familiar with the attachment and any disconnect features. This product is not intended to be used in a transport position or to be backed over curbs. When not in use, the product should be removed from the mower and transported in a safe manner. Failure to follow these instructions will void the warranty.



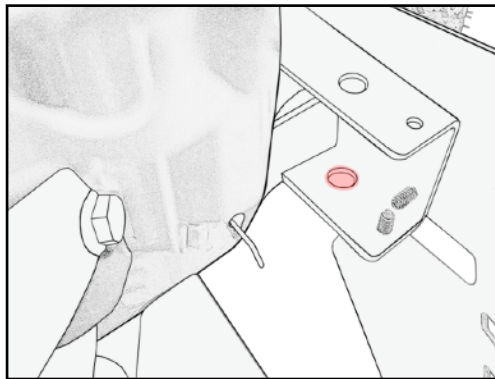
US Patent 6,962,039 B2, US Patent 6,993,894 B2

## Mounting Instructions CheckMate™ for Toro TimeCutter

Congratulations on your new purchase! You are just steps away from creating a beautifully patterned lawn using your new CheckMate™ lawn striping roller. To ensure a long life of both your mower and roller, please be sure to follow the mounting recommendations below.

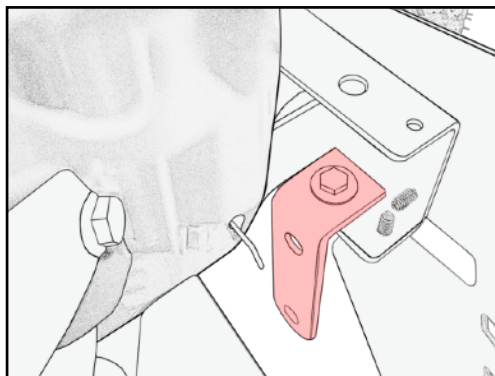
### **Step 1: Identify Mounting Location**

Identify the mounting location for the CheckMate™ bracket by viewing the schematic below. Utilize the existing hole noted in red which is located on each side of the machine.



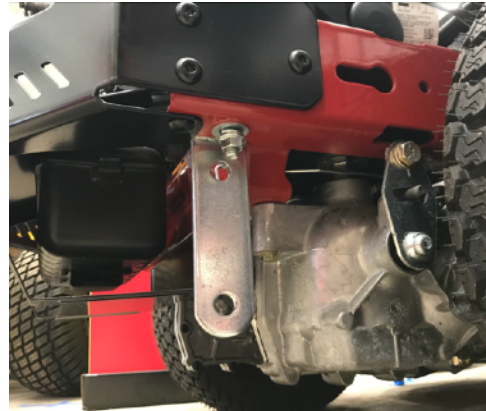
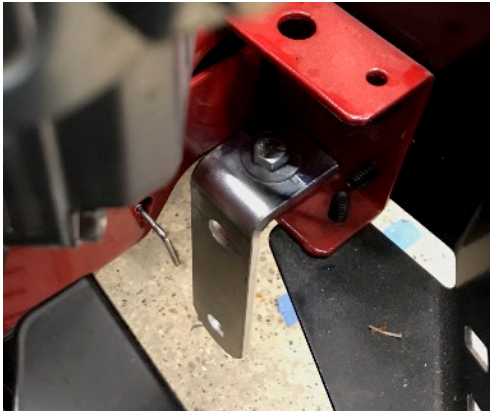
### **Step 2: Assemble Brackets on Mower**

Place the L-bracket onto the frame, aligning the hole of the bracket with the existing hole in the mower frame. Place the provided 3/8" x 1" bolt with 3/8" flat washer through the L-bracket on the inside of the frame. On the underside of the bolt, place a 3/8" flat washer, a 3/8" split lock washer, and a 3/8" locknut. Tighten the locknut to firmly attach bracket to the frame.



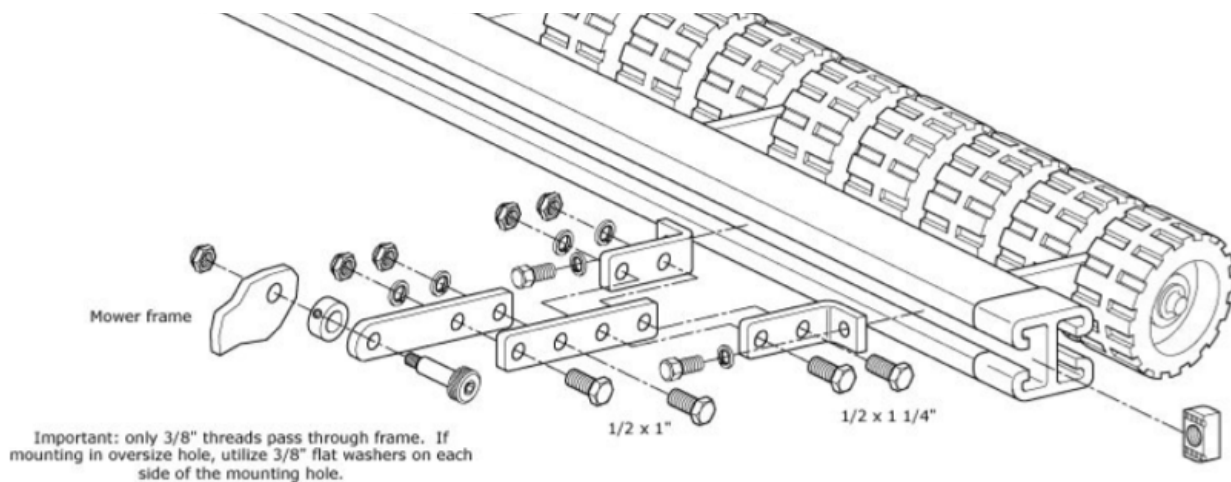
## **Step 2 Cont. : Example Photos**

Please utilize the photos below for reference when installing the CheckMate™ L-Bracket.



## **Step 3: Assemble Mounting Arms**

Use the schematic below to assemble your mounting arms that will attach to the L-Brackets on the mower frame. When attaching the arms to the Striping Kit, finger tighten the bolts first so that you can position the arms to center the Striping Kit behind the mower.





#### **Step 4: Installing Striping Kit to Mower**

Using the newly assembled mounting arms that are loosely attached to the Striping Kit, align with the L-brackets on the mower. Once you have your striping kit centered behind the machine, tighten the mounting arms to the grey channel using a 3/4" wrench.



#### **Step 5: Enjoy Striping With Your New CheckMate™ Striping Kit**

Once tightened and everything is set, you are ready to start creating vibrant stripes and patterns that will have everyone talking!

