



CheckMate™ Lawn and Athletic Field Striping Kits

1125 Mac Tech Dr C



Lansing, MI 48906



800.411.0150

www.bigleaguelawns.com



CheckMate™ Kubota Z200/700 | ZD1000/1200/1500 Zero Turn Lawn Striping Kit Installation Guide

Important

Big League Lawns, LLC warrants their products to be free of defects in material and workmanship. This warranty does not cover defects due directly or indirectly to misuse, abuse, normal wear and tear, failure to properly maintain the product or used for a purpose other than that for which it is intended. The duration of this warranty is expressly limited to one year parts and labor beginning from the date of delivery to the original customer.

The obligation of Big League Lawns, LLC is limited solely to the repair or replacement, at our option, at its factory or authorized repair agent of any part that should prove deficient. Purchaser must maintain the product under normal operating conditions at all times. Prior to operation, become familiar with the attachment and any disconnect features. This product is not intended to be used in a transport position or to be backed over curbs. When not in use, the product should be removed from the mower and transported in a safe manner. Failure to follow these instructions will void the warranty.



US Patent 6,962,039 B2, US Patent 6,993,894 B2

Congratulations on your new purchase! You are just steps away from creating a beautifully patterned lawn using your new CheckMate™ lawn striping roller. To ensure a long life of both your mower and roller, please be sure to follow the mounting recommendations within this packet.



If you should have any questions regarding the use of a particular mounting method, please do not hesitate to contact us at 800.411.0150 or via email at sales@bigleaguelawns.com.

Important: If you purchased your striping kit through a 3rd party vendor and have any questions regarding your mounting options, please do not hesitate to contact us. We have a great wealth of knowledge, tips and tricks, which may be helpful. Unfortunately, when we receive purchase orders via 3rd party vendors we do not know in advance what mower the roller is being attached to.

Thank you,

Big League Lawns, LLC

When Mowing Isn't Enough... Let it Roll!

US Patent 6,962,039 B2

US Patent 6,993,894 B2

FEIN 38-3198349

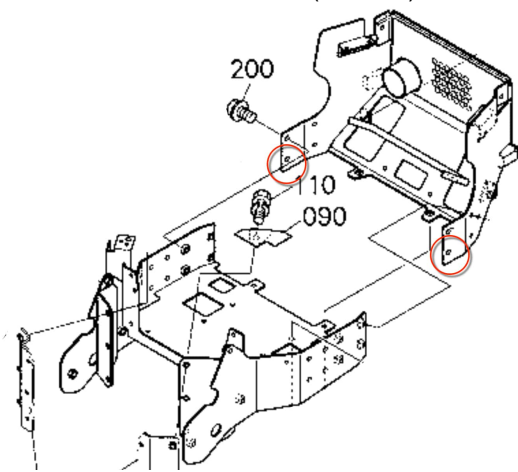
Identify Mounting Hole/Bolt

For Bolt On and Coupler Installation, use the below schematics to locate your mounting hole locations. You may have existing holes that are currently occupied by OEM bolts, or you will need to drill a new 3/8" hole on each side of your frame/engine guard to accommodate the provided Pivot Bolts. Your specific mowers schematic will tell you which is required.

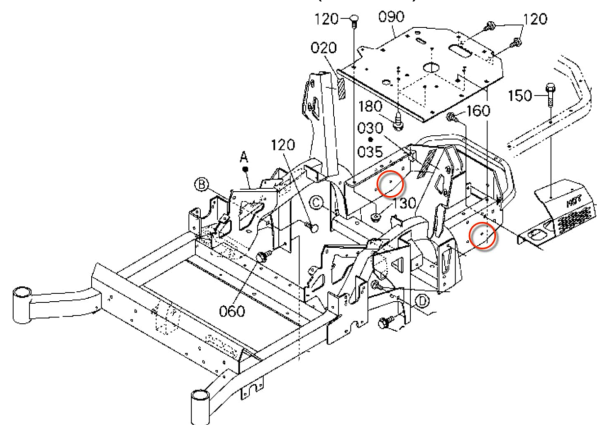
If you have existing bolts, you will remove them and replace with the provided pivot bolts, however existing bolts installed on the ZD1500 Series will be reversed and utilized to mount.

Kubota Zero Turn Mounting Schematics

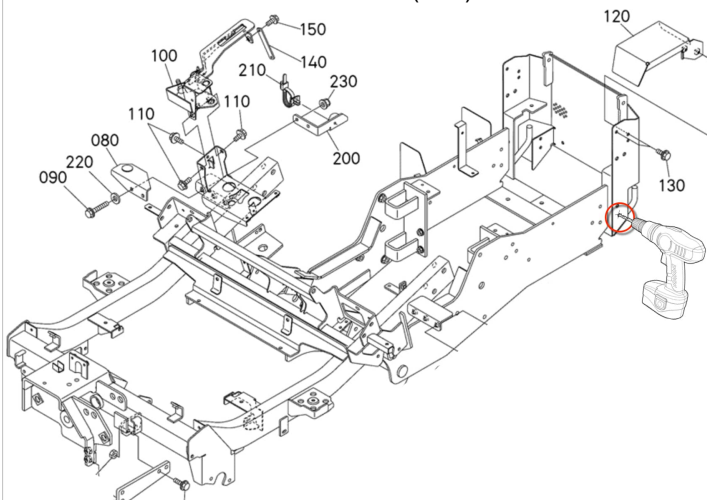
Z200 (Bolt On)



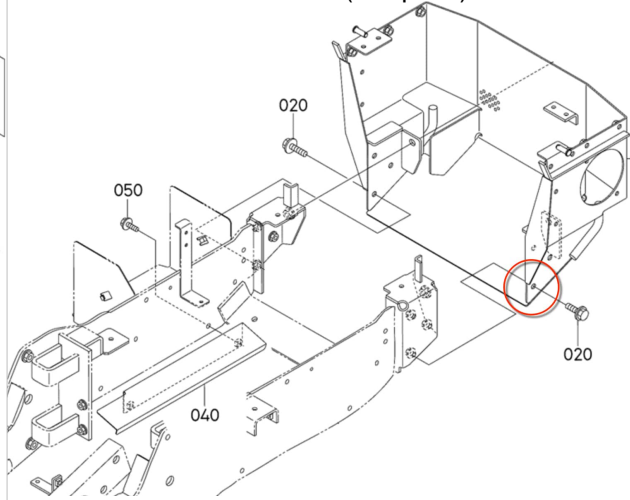
Z700 (Bolt On)



ZD1000/1200 (Drill)



ZD1500 (Couplers)



Series ZD1500

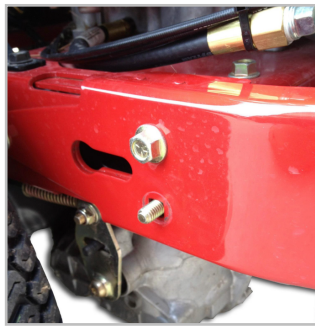
Instructions for Coupler Nut Installation

Reverse your lowest engine guard bolts on each side of your mower (shown on the ZD1500 schematic), once reversed you will be able to thread the provided coupler nuts to your existing bolts. Next, thread the provided pivot bolts to the opposite side of the couplers (See guide below). **Follow Arm Assembly Guide on next page**

(1) Acquire Hole



(2) Install bolt



(3) Add lock washer



(4) Tighten coupler nut



(5) Thread pivot bolt



(6) Tighten pivot bolt



Mounting Option B and D

Once your holes are located/drilled you are ready to assemble your arms and install them to your frame. You will want to follow the schematic below to assemble your mounting arms. **Mounting Option B is usually the preferred option for Kubota mowers, however if you need more clearance for your striping kit please use Option D as it incorporates extension arms.**

Tools Required: For this installation you will need the following tools.



CheckMate™ Hardware



Drill
(*Depends on
mower.)

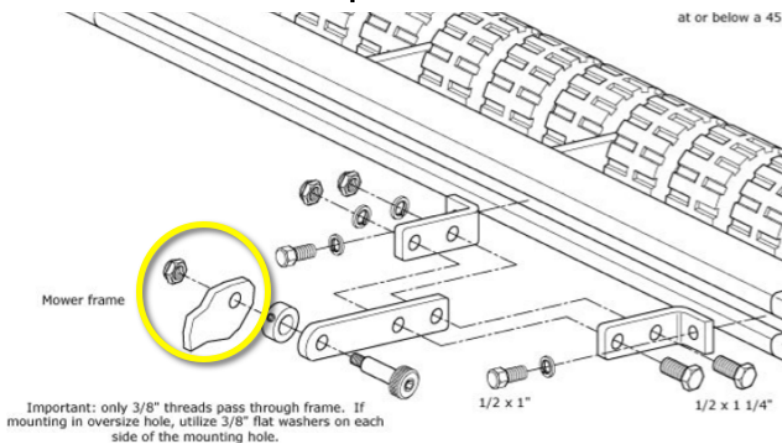


3/8" Drill Bit
(*Depends
on mower.)

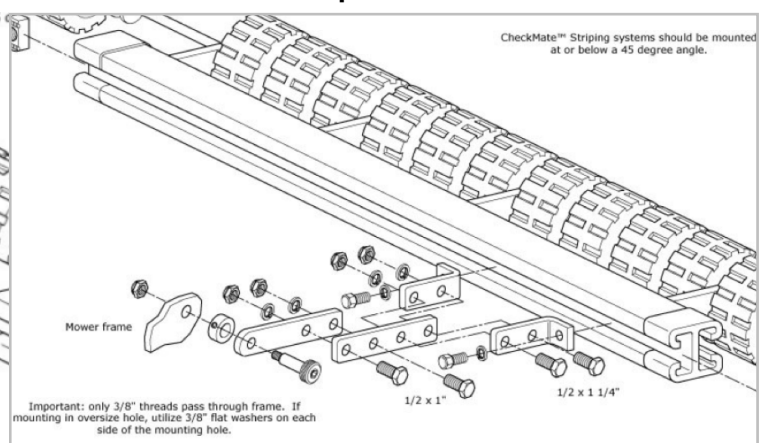


1/8" wrench or socket
and 3/4" wrench or
socket

Option B



Option D



Scan the second QR code on the page included with your shipment to view a mounting arm installation tutorial.

Final Step For All Mounting Processes: Center the CheckMate™ behind the machine.

Once you have the mounting arms assembled and placed on the roller, adjust the roller side to side until it is centered behind the mower. Once you have centered the CheckMate™ striping kit, you can proceed to tighten the mounting arms to the rollers gray channel/cross member.



Installation is now complete! Enjoy your striping with your new CheckMate™ Striping kit!