



CheckMate™ Lawn and Athletic Field Striping Kits

1161 E. Clark Road, Suite #220



DeWitt, MI 48820



800.411.0150

[www.bigleaguelawns.com](http://www.bigleaguelawns.com)



## CheckMate™ Wright Stander ZK Lawn Striping Kit Installation Guide

### Important

Big League Lawns, LLC warrants their products to be free of defects in material and workmanship. This warranty does not cover defects due directly or indirectly to misuse, abuse, normal wear and tear, failure to properly maintain the product or used for a purpose other than that for which it is intended. The duration of this warranty is expressly limited to one year parts and labor beginning from the date of delivery to the original customer.

The obligation of Big League Lawns, LLC is limited solely to the repair or replacement, at our option, at its factory or authorized repair agent of any part that should prove deficient. Purchaser must maintain the product under normal operating conditions at all times. Prior to operation, become familiar with the attachment and any disconnect features. This product is not intended to be used in a transport position or to be backed over curbs. When not in use, the product should be removed from the mower and transported in a safe manner. Failure to follow these instructions will void the warranty.



Congratulations on your new purchase! You are just steps away from creating a beautifully patterned lawn using your new CheckMate™ lawn striping roller. To ensure a long life of both your mower and roller, please be sure to follow the mounting recommendations below.

**Please note the following prior to installing your new CheckMate™ Striping System:**



- All systems, regardless of hardware configurations, should be mounted at or below a 45 degree angle from the mower.

If you should have any questions regarding the use of a particular mounting method, please do not hesitate to contact us at 800.411.0150 or via email at [sales@bigleaguelawns.com](mailto:sales@bigleaguelawns.com).

Important: If you purchased your striping kit through a 3<sup>rd</sup> party vendor and have any questions regarding your mounting options, please do not hesitate to contact us. We have a great wealth of knowledge, tips and tricks, which may be helpful. Unfortunately, when we receive purchase orders via 3<sup>rd</sup> party vendors we do not know in advance what mower the roller is being attached to.

Thank you,

Big League Lawns, LLC


**When Mowing Isn't Enough... Let it Roll!**

**US Patent 6,962,039 B2**

**US Patent 6,993,894 B2**

**FEIN 38-3198349**

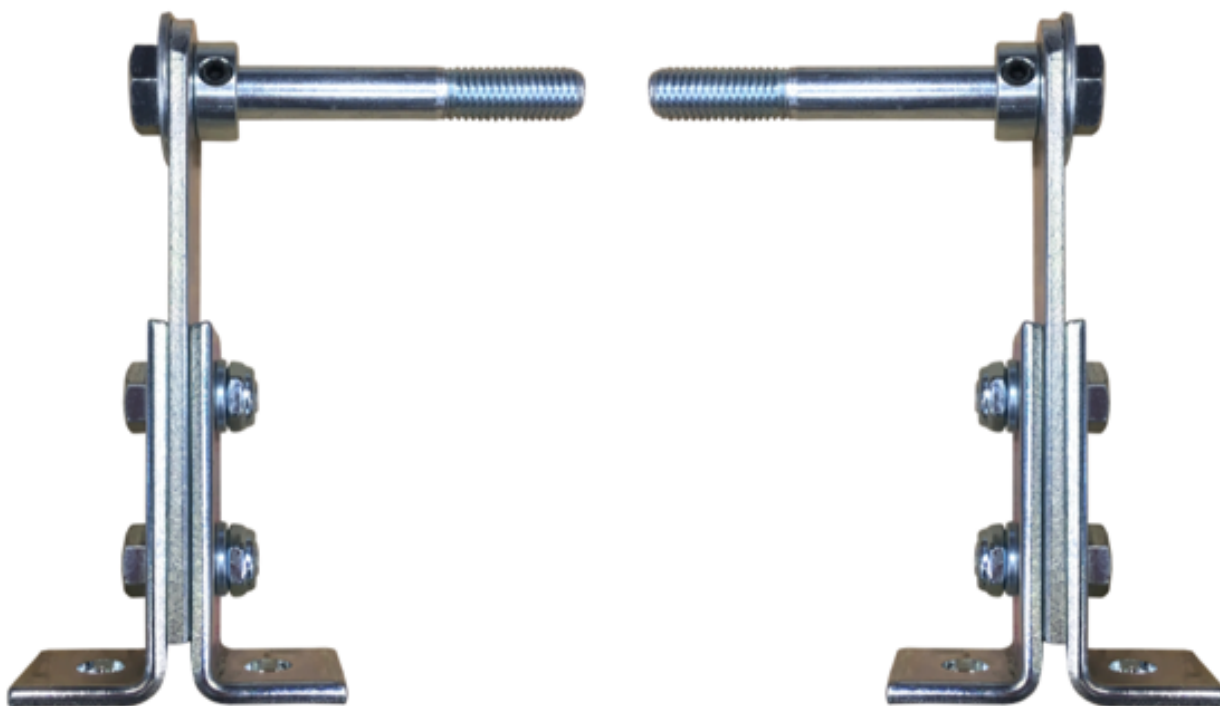


Hardware Configuration:	Most Commonly Used:	Supporting Photos:
Mounting Option B	Recommended for all commercial walk behinds and stand-on mowers.	

## Mounting Option B

Important: Reference the photo below to assemble your mounting arms.

### Wright Stander ZK Mounting Brackets

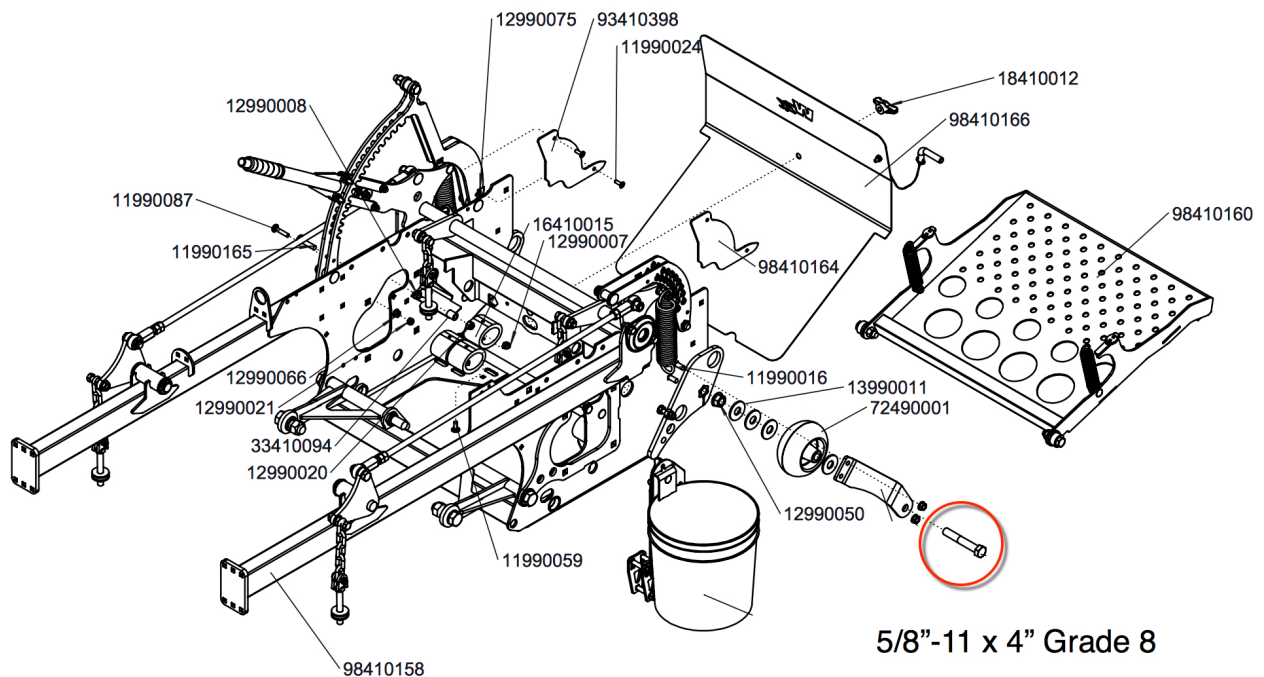




Remove Highlighted 5/8"-11 x 4" bolt from the anti-scalp wheel and replace with supplied 5/8" x 5" CheckMate Mounting bolt.

**Note: The Checkmate mounting brackets will move up and down on the outside of each steel flanged of the anti-scalp wheels.**

Once your arms are installed to your anti scalp wheels you are ready to bolt them to your striping kit.



Now that your striping kit is installed, lift it up and down to insure it is not hindered by or interfering with your mower in any way.

**Installation is now complete! Enjoy striping your lawn with your new CheckMate Stripping kit!**