



CheckMate™ Lawn and Athletic Field Striping Kits

1161 E. Clark Road, Suite #220

DeWitt, MI 48820

800.411.0150

[www.bigleaguelawns.com](http://www.bigleaguelawns.com)



## CheckMate™ Scag SWZT Lawn Striping Kit Installation Guide

### Important

Big League Lawns, LLC warrants their products to be free of defects in material and workmanship. This warranty does not cover defects due directly or indirectly to misuse, abuse, normal wear and tear, failure to properly maintain the product or used for a purpose other than that for which it is intended. The duration of this warranty is expressly limited to one year parts and labor beginning from the date of delivery to the original customer.

The obligation of Big League Lawns, LLC is limited solely to the repair or replacement, at our option, at its factory or authorized repair agent of any part that should prove deficient. Purchaser must maintain the product under normal operating conditions at all times. Prior to operation, become familiar with the attachment and any disconnect features. This product is not intended to be used in a transport position or to be backed over curbs. When not in use, the product should be removed from the mower and transported in a safe manner. Failure to follow these instructions will void the warranty.



US Patent 6,962,039 B2, US Patent 6,993,894 B2

Congratulations on your new purchase! You are just steps away from creating a beautifully patterned lawn using your new CheckMate™ lawn striping roller. To ensure a long life of both your mower and roller, please be sure to follow the mounting recommendations below.

**Please note the following prior to installing your new CheckMate™ Striping System:**

- All units ship with two 1/2" x 1" pivot bolts; each bolt contains 3/8" threads. Proper mounting of this bolt requires that only the threaded portion of this bolt pass through its' mounting hole. Allowing the smooth 1/2 " portion of this bolt to also pass through the hole will restrict the roller from pivoting properly.
- All systems, regardless of hardware configurations, should be mounted at or below a 45 degree angle from the mower.



If you should have any questions regarding the use of a particular mounting method, please do not hesitate to contact us at 800.411.0150 or via email at [sales@bigleaguelawns.com](mailto:sales@bigleaguelawns.com).

Thank you,

Big League Lawns, LLC

**When Mowing Isn't Enough... Let it Roll!**

**US Patent 6,962,039 B2**

**US Patent 6,993,894 B2**

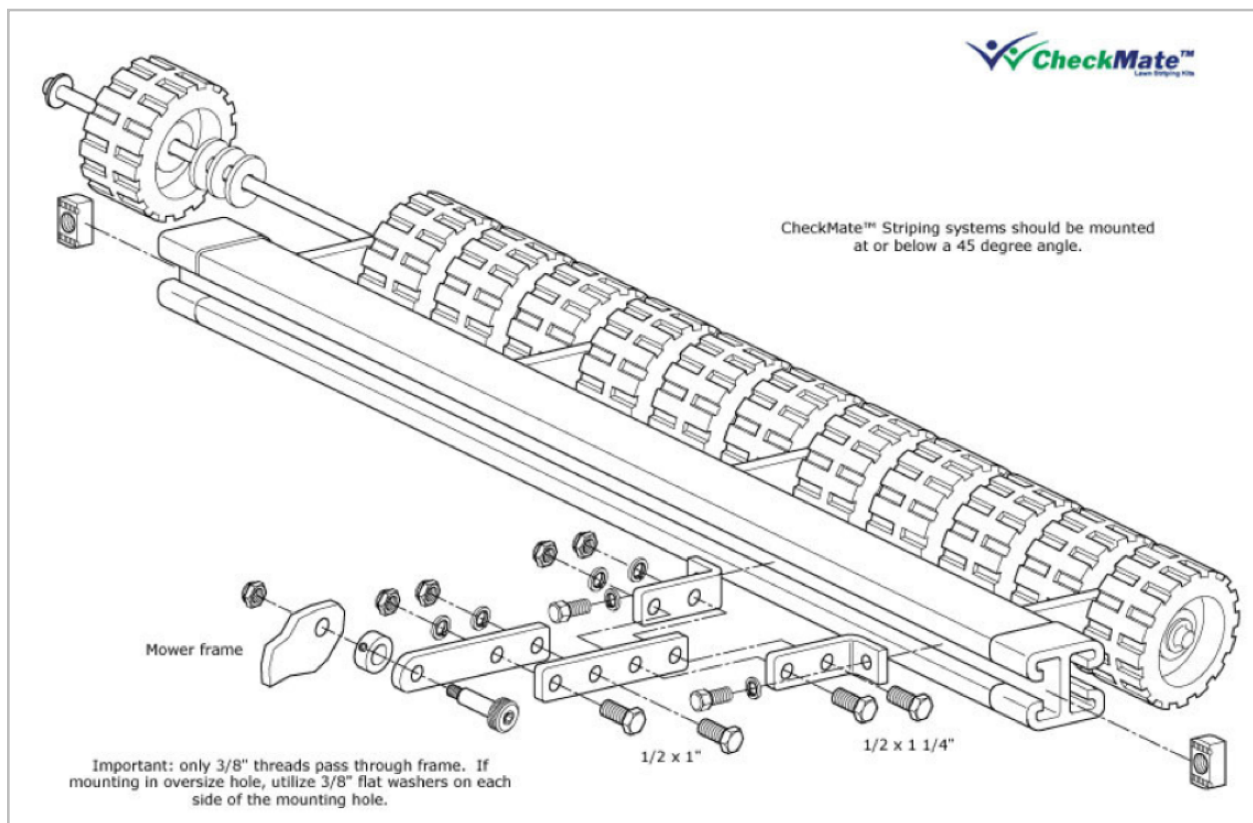
**FEIN 38-3198349**



US Patent 6,962,039 B2, US Patent 6,993,894 B2

## Mounting Option D

Important: Only the 3/8" threaded portion of your pivot bolt threads pass through the mower frame. If you are mounting to an oversize hole, please place a 3/8" flat washer on the pivot bolt threads to prevent the smooth portion of this bolt from passing through your frame.



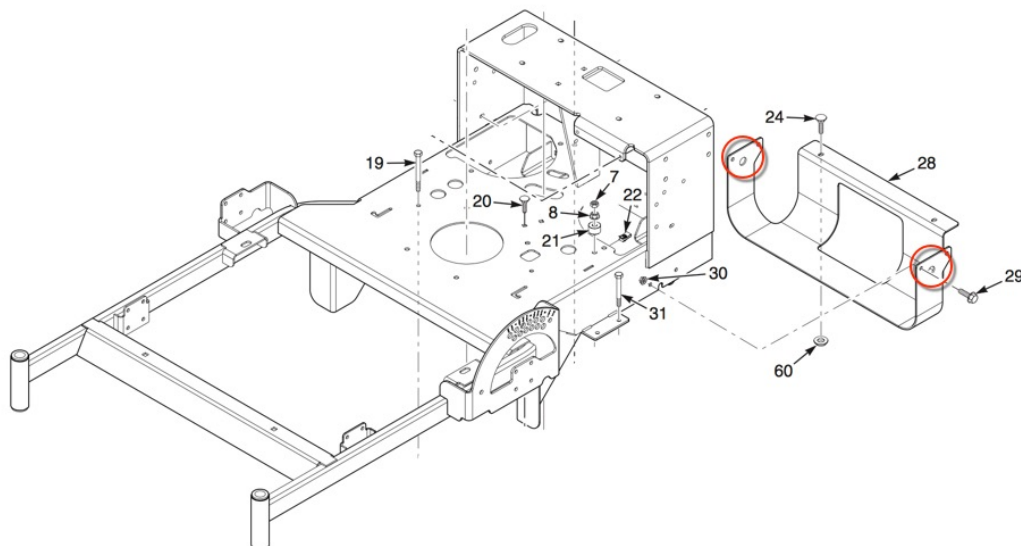


US Patent 6,962,039 B2, US Patent 6,993,894 B2

**Important: Only the 3/8" threaded portion of the pivot bolt threads pass through your mower frame. You will be mounting to an oversize hole, you will need to place a 3/8" flat washer on the pivot bolt threads, one on each side of your mower's frame, to prevent the smooth portion of the bolt from passing through your frame.**

Your pivot bolts will be mounted to the holes marked on the schematic below with red circles. It's best to mount your pivot bolts and pivot arms first, then connect your built up arms (seen in the Mounting Option D section of this packet) to the pivot arms prior to connecting them to your striping kit's channel. This will make installation much easier as you won't be fighting the weight of the striper throughout the process.

Once fully installed, simply lift your striper up to make sure it isn't impeded in anyway.



**Installation is now complete! Enjoy your striping with your new CheckMate™ Stripping kit!**