



US Patent 6,962,039 B2. US Patent 6,993,894 B2

## Mounting Instructions For all Toro Recycler Mowers



### Important

Big League Lawns, LLC warrants their products to be free of defects in material and workmanship. This warranty does not cover defects due directly or indirectly to misuse, abuse, normal wear and tear, failure to properly maintain the product or used for a purpose other than that for which it is intended. The duration of this warranty is expressly limited to one year parts and labor beginning from the date of delivery to the original customer.

The obligation of Big League Lawns, LLC is limited solely to the repair or replacement, at our option, at its factory or authorized repair agent of any part that should prove deficient. Purchaser must maintain the product under normal operating conditions at all times. Prior to operation, become familiar with the attachment and any disconnect features. This product is not intended to be used in a transport position or to be backed over curbs. When not in use, the product should be removed from the mower and transported in a safe manner. Failure to follow these instructions will void the warranty.

## Required Hardware:

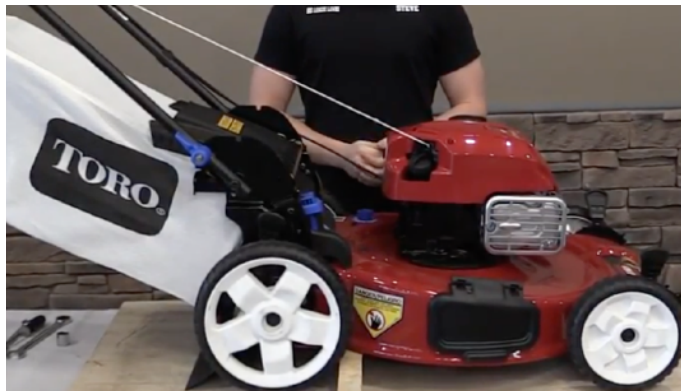
---

- 1/2" Socket/Wrench
- 9/16" Socket/Wrench
- 3/4" Socket/Wrench
- Philips Head Screwdriver
- Something to Safely Prop Up Your Machine

## Step 1: Safely prop up your mower and remove bagger from rear of mower

---

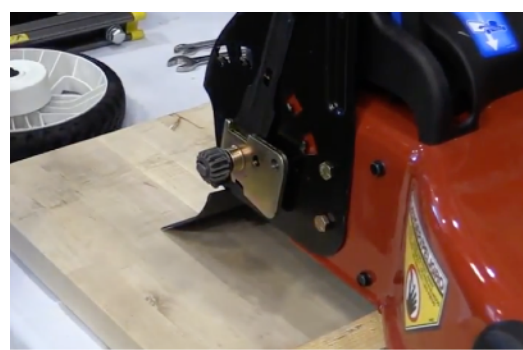
Using a block of wood or other method safely prop the rear end of the mower up, then remove your bagger (if installed) to gain access to the mounting location.



## Step 2: Remove the rear wheels

---

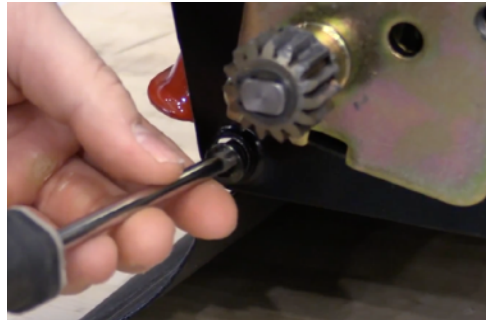
Using a 1/2 socket wrench, remove the bolt from both tires. Then remove both tires from machine.



### Step 3: Remove rear skirt

---

Remove both Philips head screws from the rear skirt using a Philips head screwdriver, then remove the rear skirt.



### Step 4: Prepare the mounting arms to connect

---

Partially disassemble your hardware by removing the 3/8 locknut from the bolt. Once removed place your bolt through the existing rear skirt holes, and finger tighten the nut. (Repeat step on both sides)



### Step 5: Connecting the mounting arms

---

Using your 9/16 wrench and 7/32 allen key tighten down your arms. After tightening, please loosen the nut [slightly] to make sure the arm freely pivots up and down. (Repeat step on both sides)





## Step 6: Install kit

---

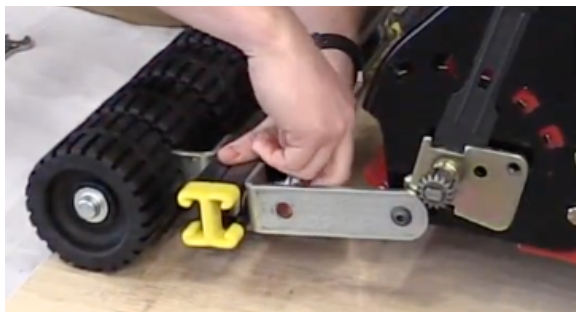
Now that the arms are attached we can now install the kit. First remove the bolt from the rectangular nuts preinstalled inside the channel. Adjust them to the distance between your two mounting arms.



## Step 7: Tightening channel nuts

---

Next line up your kit with your mounting arms. Place the bolt, with lock washer, through the mounting arm and thread back into the channel nuts. Finger tighten the bolts down.



## Step 8: Re-attach wheels

---

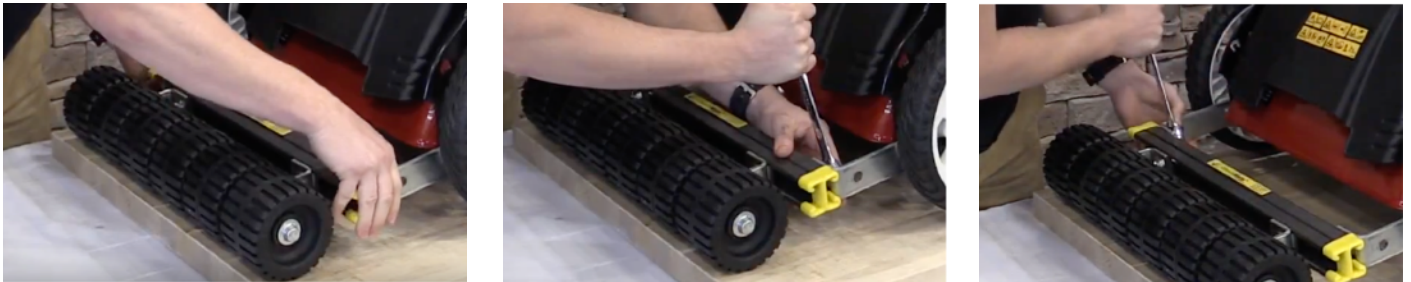
After attaching your kit to your mower, use a 1/2" wrench or socket and reattach your tires to the mower.



## Step 9: Adjusting your kit

---

Final step: Center the striping kit behind the mower. Once centered, use a 3/4" wrench to tighten down your two mounting arms to your channel nuts.



## Step 10: (Optional) Reinstall bagger

---

Double check to make sure your kit is freely floating up and down. If desired reinstall your bagger.



**Enjoy your striping with your new CheckMate™ Striping kit!**