



1161 E. Clark Road, Suite #220

◆ DeWitt, MI 48820

◆ 800.411.0150

[www.bigleaguelawns.com](http://www.bigleaguelawns.com)



### **CheckMate™ Lawn Striping Kit For Country Clipper Boss/Charger Installation Guide**

#### **Important**

Big League Lawns, LLC warrants their products to be free of defects in material and workmanship. This warranty does not cover defects due directly or indirectly to misuse, abuse, normal wear and tear, failure to properly maintain the product or used for a purpose other than that for which it is intended. The duration of this warranty is expressly limited to one year parts and labor beginning from the date of delivery to the original customer.

The obligation of Big League Lawns, LLC is limited solely to the repair or replacement, at our option, at its factory or authorized repair agent of any part that should prove deficient. Purchaser must maintain the product under normal operating conditions at all times. Prior to operation, become familiar with the attachment and any disconnect features. This product is not intended to be used in a transport position or to be backed over curbs. When not in use, the product should be removed from the mower and transported in a safe manner. Failure to follow these instructions will void the warranty.



US Patent 6,962,039 B2, US Patent 6,993,894 B2

## Mounting Instructions Country Clipper Boss/Charger Mowers

Congratulations on your new purchase! You are just steps away from creating a beautifully patterned lawn using your new CheckMate™ lawn striping roller. To ensure a long life of both your mower and roller, please be sure to follow the mounting recommendations below.

### Tools Required:

9/16" Wrench (x2)	3/4" Wrench	Crescent Wrench (Optional)
		

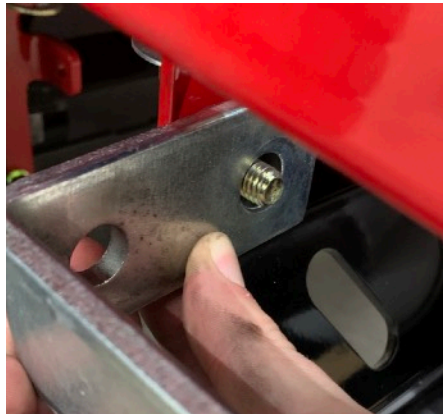
### Step 1: Locate Mounting Bolt

The CheckMate™ will utilize an existing 3/8" bolt located under the machine on each side. This will be the mounting location for the CheckMate™ Quick Release Bracket.



## **Step 2: Assemble Brackets on Mower**

Using a 9/16" wrench turning counter clockwise, remove the locknut from the 3/8" bolt. Place the mounting bracket on the threads of the bolt and secure using the locknut. Use the 9/16" wrench to secure the bracket to the mower frame.



### **Note:**

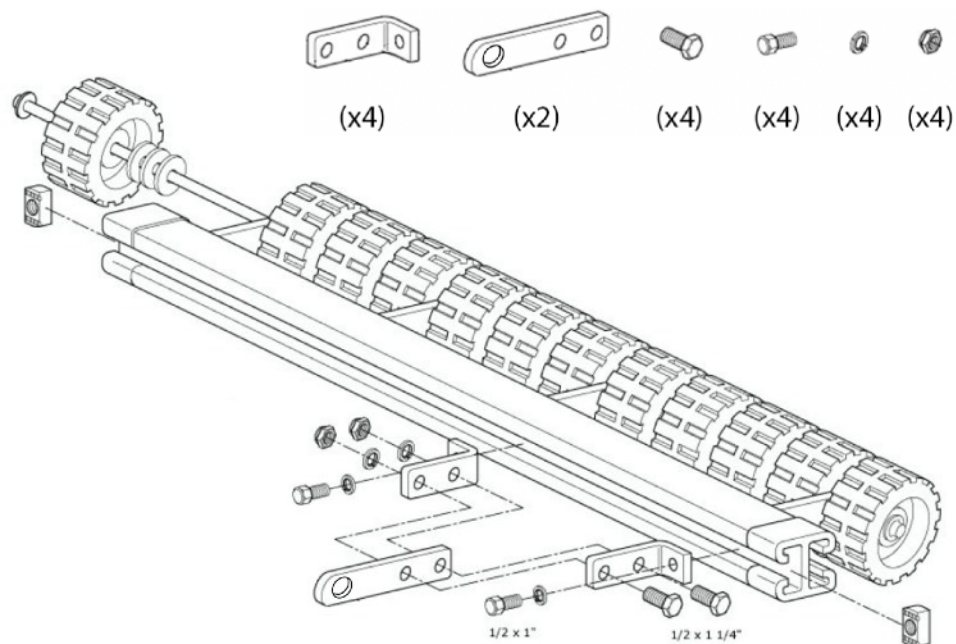
In order for the quick release system to function properly, it is CRUCIAL to make sure that both of the stabilizer pins are pointed to the left when installed on the machine. (This will help to position the pin away from the muffler.)





### **Step 3: Assemble Mounting Arms**

Use the schematic below to assemble your mounting arms that will attach to the stabilizer pins on the quick release brackets. When attaching the arms to the Striping Kit, finger tighten the bolts first so that you can position the arms with the quick release brackets and center the Striping Kit behind the mower.



### **Step 4: Installing Striping Kit to Quick Release Brackets**

Using the newly assembled mounting arms that are loosely attached to the Striping Kit, align them with the stabilizer pins on the quick release brackets. Once you have your striping kit centered behind the machine, tighten the mounting arms to the grey channel using a 3/4" wrench. Install the 7/16" lynch pins into the stabilizer pins to secure the CheckMate™.



### **Step 5: Enjoy Striping With Your New CheckMate™ Striping Kit**

Once tightened and everything is set, you are ready to start creating vibrant stripes and patterns that will have everyone talking!

