



1161 E. Clark Road, Suite #220



DeWitt, MI 48820



800.411.0150

www.bigleaguelawns.com



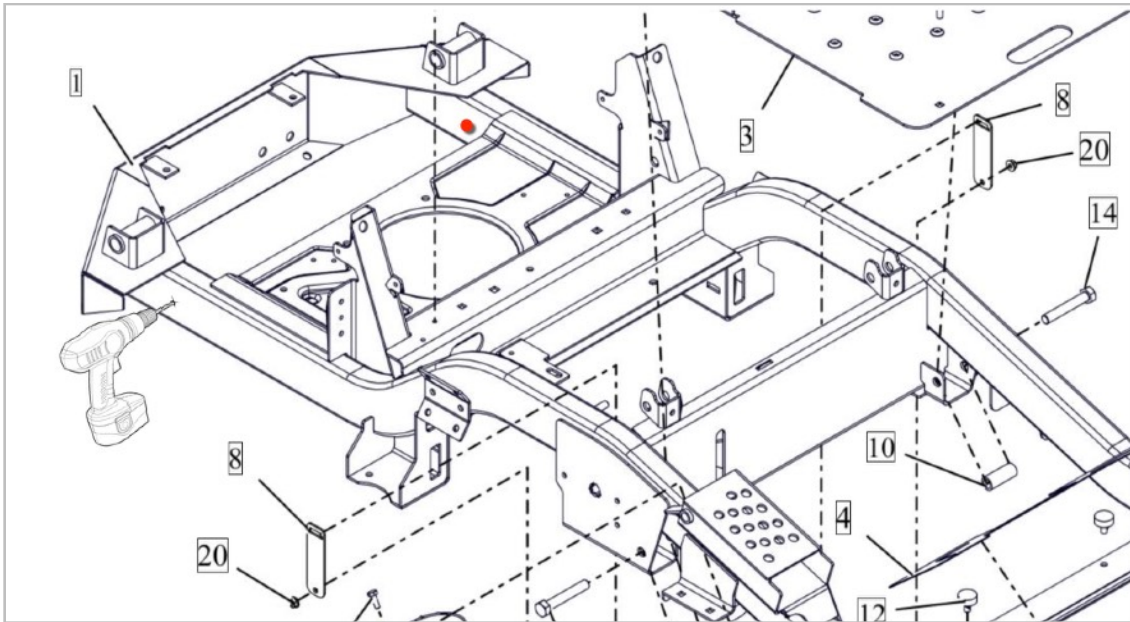
CheckMate™ Lawn Striping Kit for Ariens Apex Installation Guide

Important

Big League Lawns, LLC warrants their products to be free of defects in material and workmanship. This warranty does not cover defects due directly or indirectly to misuse, abuse, normal wear and tear, failure to properly maintain the product or used for a purpose other than that for which it is intended. The duration of this warranty is expressly limited to one year parts and labor beginning from the date of delivery to the original customer.

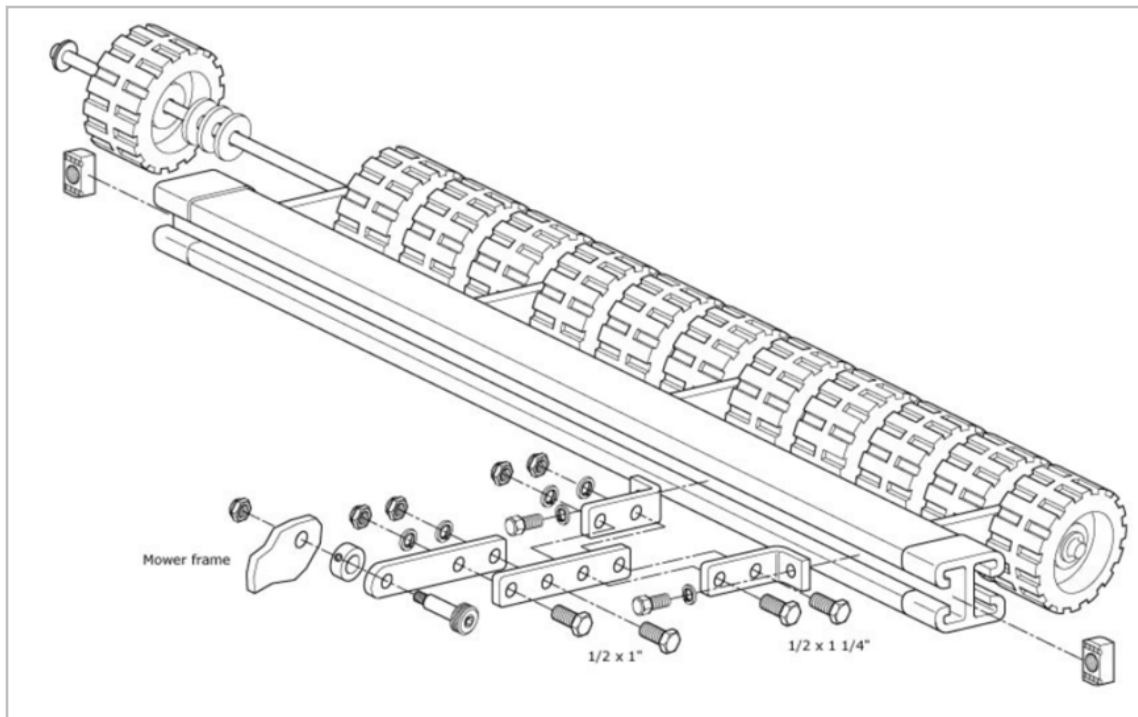
The obligation of Big League Lawns, LLC is limited solely to the repair or replacement, at our option, at its factory or authorized repair agent of any part that should prove deficient. Purchaser must maintain the product under normal operating conditions at all times. Prior to operation, become familiar with the attachment and any disconnect features. This product is not intended to be used in a transport position or to be backed over curbs. When not in use, the product should be removed from the mower and transported in a safe manner. Failure to follow these instructions will void the warranty.

Ariens Apex Schematic



- Installation requires one 3/8" through hole on each side of the mower frame.
- Please note the 'approximate' location noted above; keep in mind that the holes should be located in the same position on each side of the mower frame.
- Insert one 3/8 x 2 1/2" bolt through the mounting hole with the bolt threads pointing outward towards the tires.. Tighten in place with 3/8" lock washer and straight coupler nut (pre-assembled in hardware pack).
- Build mounting arms as specified below:





Sample Coupling Process

(1) Acquire Hole



(2) Install bolt



(3) Add lock washer



(4) Tighten coupler nut



(5) Thread pivot bolt



(6) Tighten pivot bolt



Attach Mounting Arms to Cross Channel



Photo demonstrates how the CheckMate™ mounting arm should freely swivel once attached to the coupler nut.



Remove 1/2" x 1" bolts pre-installed in cross channel. Insert bolts through bottom L brackets of mounting arms and into channel locking nuts.



Center the roller behind the mower and tighten the mounting arms to the cross channel using a 3/4" wrench. Please apply approximately 90 lbs. of torque to secure the arms in place.